



## EUROPEAN SUMMER SYMPOSIUM IN ECONOMIC THEORY

Generously hosted by  
Study Center Gerzensee

Monday 29 June-Friday 10 July 2009

# Spatial Asset Pricing: A First Step

François Ortalo-Magné (University of Wisconsin-Madison) and Andrea Prat  
(London School of Economics and CEPR)

*We are grateful to the following institutions for their financial and organizational support: Study Center Gerzensee and the Swiss National bank.*

*The views expressed in this paper are those of the author(s) and not those of the funding organization(s) or of CEPR, which takes no institutional policy positions.*

# Spatial Asset Pricing: A First Step\*

François Ortalo-Magné  
*University of Wisconsin–Madison*  
*Toulouse School of Economics*

Andrea Prat  
*London School of Economics*

**Third Draft**

June 23, 2009

## **Abstract**

We develop an asset pricing model where agents make both location decisions and investment decisions. There are four classes of assets: a risk free bond, houses (in various locations), stocks, and human capital (with different productivity in different locations). The dividend of real estate – the local rent – is endogenous and depends on demand and supply. Agents can invest in all stocks and in all real estate markets.

Choosing to live in certain place corresponds to acquiring a “location security” yielding: (i) a stochastic local labor income stream; (ii) a stochastic local rent payment stream. We obtain a close-form representation of portfolio allocations and asset prices. We characterize the relation between the equilibrium spatial distribution of human capital and local differences in real estate risk premia. Our equilibrium construction relies on the notion of the marginal resident – an agent who receives the same expected utility from all the possible locations.

---

\*We are grateful to Orazio Attanasio, Morris Davis, Christian Julliard, Robert Kollmann, Alex Michaelides, Sven Rady, Dimitri Vayanos for helpful discussions and seminar participants at the University of California – Berkeley, Brown University, ECARES, the London School of Economics, the University of Mannheim, the University of North Carolina, Northwestern University, and the Toulouse School of Economics for useful comments. We are grateful to CEPR, the Financial Markets Group at LSE, and the Toulouse School of Economics for their support.

# 1 Introduction

What determines house prices in different locations? To answer this important question, one needs to model how people choose where to live and work and how they choose how to invest in housing and other securities. In turn, location decisions and investment decisions depend on how house prices vary across locations.

The goal of this paper is to offer a theoretical benchmark to analyze this fixed point problem. Our paper is a first step toward a theory of asset pricing where house prices are endogenous and agents choose where to locate.<sup>1</sup>

We build on the standard spatial equilibrium framework of urban economics: access to a location’s amenities including earning opportunities requires consuming one unit of local housing. We set the spatial equilibrium problem within a CARA-normal portfolio choice and asset pricing framework. Combining these two basic frameworks allows us to obtain a tractable model. The model highlights the interactions between spatial equilibrium and asset pricing in a standard portfolio choice environment, hence “spatial asset pricing.”

The paper yields novel testable insights into the determinants of the allocation of households across cities, the cross-sectional variation of households’ portfolios, and the cross-sectional variation of returns to housing.

**The model.** There are four classes of assets: a risk-free bond, stocks, residential properties in a number of locations, and non-transferrable human capital. As in standard asset pricing models, agents may lend and borrow at the risk-free bond rate without any constraint. Agents may also invest in stocks defined as claims over exogenous stochastic streams of dividends. The dividend stream of residential properties, however, is determined endogenously. Residential properties provide access to a stochastic production technology that is specific to the city where they are located. An agent’s human capital determines the expected level of his earnings in the city and the covariance of his earnings with the city-specific production technology.<sup>2</sup> The distribution of individual characteristics across the population is left in a general form.<sup>3</sup>

Properties differ only in their location. The supply of houses is fixed in every location but

---

<sup>1</sup>To the best of our knowledge, this is the first model where household location choices, house prices, rents and asset prices are all determined endogenously. A review of the literature is available in the next section.

<sup>2</sup>For most of the paper, we interpret local productivity as labor-related and hence translating into labor earnings, but the model has an equivalent interpretation in terms of leisure, where productivity is understood as the ability of the agent to enjoy local amenities. See page 12 for a more detailed discussion of the consumption interpretation.

<sup>3</sup>For most of the paper, we assume that there are no spillover effects across agents, namely the productivity of an agent depends on his location but not by who else lives in that location. In Section 4.5, we show that our characterization extends to a model with generic economies of agglomeration.

one, the countryside, where it is unlimited. Houses can be rented at the local equilibrium market rate. They can be purchased or sold (even fractionally) at the local equilibrium price without any transaction cost. Obviously, agents may buy a home in their city, in which case they are homeowners. Agents may buy residential properties, not only in the city where they live but also in the other cities. There are no frictions on asset markets (e.g. no credit constraints, no transaction costs for buying or renting, no limits to fractional ownership, etc)

We want to obtain closed-form solutions and expressions that are comparable to standard mean-variance asset pricing models. To this end, we assume an overlapping generations structure with finite life and constant population size. Agents have constant-absolute risk-aversion preferences with infinite elasticity of intertemporal substitution and that both city-productivity and stock-dividends stochastic shocks are normally distributed. We do not impose any restrictions on the covariances between the stochastic processes driving stock dividends and city-specific technology shocks. Agents choose where to live at the beginning of their life – or after completing their education. While all investment decisions can be re-visited in every period, the location choice is irreversible (moving costs are infinite).<sup>4</sup>

**Location security.** Each location can be represented as a free “location security” composed of two parts: (1) a unit of location-specific human capital, which yields a stream of stochastic benefits, understood as wages or enjoyment of local amenities, and (2) a unit of local housing due to the need for a home in that location, which requires a stream of stochastic rent payments.

The location decision and the portfolio allocation problem of an agent can therefore be examined within the same dynamic optimization framework. Choosing a location amounts to solving an expanded portfolio problem where on top of the choice of financial assets, each household must pick one unit of one location security. This characterization reflects the discreteness of the choice of location.

With this observation in mind, it becomes obvious that when an agent moves to a city, he considers more than the expected level of after-rent income; he also takes into account the amount of systemic risk that he takes up when he acquires the combination of location-specific human capital and housing consumption. In turn, systemic risk depends on the equilibrium allocation of agents across locations. The key advantage of our simple set-up is that it leads to a closed-form solution of this complex fixed-point problem.

**Spatial allocation.** In equilibrium asset prices are relevant to the spatial allocation.

---

<sup>4</sup>The assumption that people cannot move is useful for tractability. However, the assumption is not necessary for qualitative results about the role of housing as a hedge. Ortalo-Magné and Prat (2006) develop a (much simpler) model where people can move freely.

The reverse is true as well: the spatial allocation is relevant to asset prices. First, the rents are determined by the productivity of the marginal residents. The marginal residents are households who are indifferent between two or more locations. We demonstrate that our model admits a set of hyper-marginal residents: households indifferent among all locations, including the countryside. These households are all age 1 since location choice takes place at age 1 once and for all.

Existence of a set of hyper-marginal households is due to the assumption that the distribution of personal characteristics has full support and to the fact that in our CARA-normal framework, the utility obtained in any location is linear in the agents idiosyncratic parameters and rents. Given an agent with certain characteristics and given a certain city, one can always find an agent with similar characteristics but a slightly stronger or weaker relative preference for that given city. This continuity argument implies that, given an equilibrium vector of prices and rents, there must be a super-indifferent agent.<sup>5</sup>

Characterizing the set of hyper-marginal households is key to proving the existence and uniqueness of an equilibrium with stationary allocation of households across locations, linear housing rents and asset prices. We actually proceed by guessing a parametric solution for all rents and prices and verifying the validity of our guess. We build our guess by adapting standard results obtained in CARA-normal portfolio choice frameworks.

The hyper-marginal residents provide the channel through which productivity shocks are transmitted to rents. A productivity shock in any location affects the expected utility that the hyper-marginal residents receives if they move to that location and hence the local rent. Since in equilibrium these residents must remain indifferent among all locations, the local rent adjustment is exactly what is required to keep them indifferent. The indifference condition of the hyper-marginal resident pins down the relative level of rents in different locations. The fact that one location (the countryside) has unlimited supply of land determines the absolute level of rents.

The location decision of any agent can be determined by comparing his location-specific set of productivity parameters with that of the hyper-marginal residents. By aggregating the investment demand functions of all agents we obtain the asset pricing formulas for real estate in different locations and for the stocks. With all these elements in place, one can verify that the initial conjecture about the hyper-marginal resident was correct and that this it is indeed an equilibrium. Indeed, we prove that the equilibrium we identify is the unique equilibrium where prices can be expressed as linear functions of the underlying parameters and the allocation of households across location is remains constant over time.

---

<sup>5</sup>A side contribution of our paper is to show existence in a spatial general equilibrium model with an infinite number of types of agents. Available existence results in the literature use a different approach based on a finiteness (Grimaud and Laffont 1989).

Because we assume households choose their location at birth, marginal residents are newborn households. As households age, we do not put any restriction on the covariance of their current income with their income when newborn. A changing covariance exposes households to the risk that shocks to their income may not provide full insurance for shocks to the rent they must pay.

**Portfolio choice.** The optimal investment portfolio of every agent is characterized as a combination of two components: (1) An investment in local real estate that depends on the agent's exposure to local productivity shocks, (2) A portfolio of stocks and residential properties, with identical weights across agents. The first component is a manifestation of home bias. An agent who does not own property in the city where he lives is vulnerable to a combination of local productivity shocks and rent fluctuations (determined endogenously). This risk can be hedged away by an appropriate holding of local real estate. This hedging demand depends on the covariance between the agent's earnings and local equilibrium rents.<sup>6</sup>

**Asset pricing.** Consider the portfolio made up of all stocks and residential properties in the economy minus the homes held for hedging purposes. Let us call this portfolio the *adjusted market portfolio*. Because all households are able to fully insure themselves with some ownership stake in their local housing markets, conditional on this purchase, they are all identical with regards to risk. Hence they all have the same investment demand for the remaining securities in the economy: the adjusted market portfolio. Equilibrium requires that the price of all assets in the economy be such that total investment demand equals the adjusted market portfolio. All assets are therefore priced in this adjusted market portfolio.

The fact that the quantity of homes from each location in the adjusted market portfolio is determined endogenously, adds a channel whereby the spatial allocation of households affect the prices of all assets. Not only does the spatial allocation of households determines the stochastic properties of the rents in each location, it also determines what assets are part of the portfolio that is relevant to the pricing systemic risk in equilibrium.

Furthermore, the adjusted market portfolio contains all financial assets and housing in every location. The prices of stocks are therefore determined not only by how their dividends co-vary with those of other financial assets but also by how they co-vary with earnings on the hyper-marginal residents in each location. In particular, note that the relevant information for asset pricing due to the presence of housing in the economy cannot be represented by a single aggregate housing good.

---

<sup>6</sup>In the benchmark version of our model, home bias takes the form of differential investments in local housing. In a simple extension where we do not allow fractional ownership of homes, household use have to resort to stocks to insure themselves against fluctuations in income minus rent.

**Testable implications.** Our portfolio choice and asset pricing expressions contain only objects – such as prices and covariances – that are in principle observable. We can thus derive a number of testable implications, linking spatial and financial variables:

*Home bias.* As we saw above, our model yields home bias: people invest much more in local real estate for hedging purposes. Usually, the fact that people tend to buy local real estate is explained by tax distortions or transaction costs. Instead, our home bias occurs in a frictionless economy and it is purely due to a hedging motive. The amount of local housing that people vary with the parameters of the model, but it is likely to be of first-order magnitude. Under a simple set of assumptions, we find that a middle-aged agent buys 50% of a local house.

*Homeownership over the lifecycle.* Suppose that as agents get older, their income displays decreasing covariance with the income of the young marginal newcomers to their city. This implies agents need to purchase an increasing amount of local housing for hedging purposes as they get older. Counter to this effect is the fact that as agents get older, the number of periods to live decreases and so does their demand for insurance. It is possible for the combination of these two effects to yield a hump-shaped demand for homeownership over the life-cycle.

*Cross-sectional dispersion of housing returns.* Differences in real estate returns across locations depend on differences in the average within-location covariance of the income of each resident with the income of the current and future marginal residents. For instance, in a one-company town wages of all cohorts are highly correlated with rents: its residents do not demand local housing for hedging purposes and prices are depressed.

*Allocation of agents across cities.* The allocation of agents across cities does not maximize aggregate expected production. When choosing a location, agents trade off expected net earnings opportunities (expected wage minus expected rents) against risk exposure (volatility of income minus rent). Agents therefore do not necessarily choose the location that maximizes their output. In particular, agents prefer a location with lower expected earnings minus rents if their income in that location displays a lower correlation with rents. In such a location, the purchase of local housing provides them with insurance benefits. Nevertheless, they earn a risk premium on the local housing since it is priced by outsiders to whom the volatility of returns is a risk, not an insurance. As a corollary, people are reluctant to move to a one-company town.

*Asset pricing errors.* We can construct and price aggregate indices of stocks and real estate assets. It is also possible to quantify the error that we make if we price stocks according to

a classical beta (taking into account only the covariance with other stocks), rather than the correct beta, which is based on stocks and the portion of housing not demanded by local residents, and on the covariance of stock dividends with labor earnings of the marginal residents in every city.

**Extensions.** We build on the model to discuss two obvious extensions in the modeling of locations and housing assets.

*Agglomeration.* The model can be extended to encompass economies of agglomeration and other forms of externalities among residents. The equilibrium characterization above is valid as stated; the only – unsurprising – difference is that equilibrium uniqueness is no longer guaranteed.

*Housing indivisibility.* The model can also be adapted to allow for frictions in the real estate market: as an illustration, we assume that ownership is the only option because the transaction costs associated with renting are prohibitively high. In this case, household cannot hedge the risk in income minus rent perfectly with the ownership of local housing because they are not free to choose home much local housing to own. As a consequence, they resort to exploiting the covariance between local risk and each of the financial assets. Agents in different location therefore purchases a different portfolio of financial stocks. The home bias effect shows up in portfolio choices. An alternative specification would have considered allowing agents to either rent or own their home. Similar distortions of stock portfolios would have occurred because once again, agents are restricted away from the fractional ownership level of local housing that would provide full insurance.

The paper is organized as follows: Section 2 sets out the model. Section 3 presents the main equilibrium characterization result, through three propositions corresponding to: portfolio allocation (Proposition 1), asset pricing (Proposition 2), and location choice (Proposition 4). Section 4 uses the main result to discuss a number of related issues. Section 5 concludes. All proofs are in the Appendix.

## **Related Literature**

This is – to the best of our knowledge – the first asset pricing model where location choices, housing rents and asset prices are endogenous.

Our paper is perhaps closest in spirit to DeMarzo, Kaniel and Kremer (2004). They consider an economy with multiple communities and local goods as well as a global good. In this dynamic setting, some agents (the laborers) are endowed with human capital which will be used to produce local goods in future periods, but they are currently subject to

borrowing constraints. Other agents (the investors) own shares in firms that produce the global good. This simple set-up yields a number of powerful results. Investors care about their relative wealth in the community because they bid for scarce local goods. This generates an externality in portfolio choice, which leads to the potential presence of multiple equilibria (in the stable equilibria, investors display a strong home bias). Moreover, if there is a behavioral bias, the presence of this externality amplifies the bias through the portfolio decisions of rational investors. Clearly, our model differs from DeMarzo et al. (2004) in a number of important dimensions: (i) Our local good does not produce utility directly but it enables agents to realize their human capital potential; (ii) Our spatial allocation is endogenous; (iii) There are no credit constraints. However, we share their goal of studying the properties of portfolio choice and asset pricing under uncertainty in the presence of community effects. As in their model, a home bias arises in equilibrium due to a hedging motive.<sup>7</sup>

With regards to the real estate literature, our contribution lies in endogenizing *both* price and rent in a dynamic model with multiple locations.<sup>8</sup>

Grossman and Laroque (1991) characterize optimal consumption and portfolio selection when households derive utility from a single durable good only and trading the durable require payment of a transaction cost. They show that CAPM holds in this environment, but CCAPM fails because consumption of housing is not a smooth function of wealth due to the transaction costs. Flavin and Nakagawa (forthcoming) expand on the Grossman and Laroque framework by assuming that households derive utility not only from housing but also from numeraire consumption. They show that when housing asset returns do not co-vary with stock returns, the CCAPM holds. In equilibrium, all households hold a single optimal portfolio of risky financial assets. Depending on their holding of housing, households vary how much of their wealth is invested in this portfolio but not its composition.

An extensive literature has explored the effect of housing consumption on households' life-cycle overall consumption and investment behavior. One of the early papers by Henderson and Ioannides (1983) considers an optimal consumption and saving problem when the household chooses whether to own or rent and a wedge arises endogenously between the cost of renting and owning. Henderson and Ioannides show that the consumption demand for homeownership distorts households' investment decisions. Goetzman (1993) and Brueckner (1997) explain how this distortion affects households' portfolio choice. Flavin and Ya-

---

<sup>7</sup>Our results on home bias are also related to the international finance literature on the home bias puzzle (Stockman and Dellas, 1989). However, we differ in our focus on real estate and in that location choice is endogenous.

<sup>8</sup>A review of the empirical literature concerned with the cross-sectional dispersion of housing prices is beyond the scope of this paper. For recent evidence emphasizing variations in housing price premia see Campbell et al. (forthcoming).

mashita (2002) compute mean-variance optimal portfolios for homeowners using U.S. data on housing and financial asset returns.<sup>9</sup> Cocco (2004) also computes optimal portfolios but in a calibrated dynamic model of households consumption and portfolio choice. Housing consumption is constrained to equal housing investment in both papers.

Yao and Zhang (2004) introduce discrete tenure choice (rent or own total housing consumption) in a similar environment. They show the sensitivity of households' portfolio choice to tenure mode: owning a house leads households to reduce the proportion of equity investment in their net worth (a substitution effect). However, households give a greater weight to stocks relative to bonds in their portfolio because homeownership provides insurance against stocks and labor-income fluctuations (a diversification benefit). Altogether, these papers demonstrate that incorporating housing consumption in portfolio choice models helps reconcile theoretical predictions with cross-sectional observations. In particular, home investment seems a key factor in explaining the very limited participation of the young in equity markets. Credit constraints play a critical role in explaining the observed hump-shape in home ownership over the life-cycle.

Piazzesi, Schneider, and Tuzel (2007) study a consumption-based asset pricing model where housing rents and prices are determined endogenously; the quantity of housing follows an exogenous stochastic process. Agents can invest in both housing and stocks. The focus of the analysis is on the composition risk related to fluctuations in the share of housing in the households' consumption baskets. The authors show that the housing share can be used to forecast excess returns of stocks – a prediction that appears to be borne out by the data. Lustig and Van Nieuwerburgh (2007) propose a mechanism whereby the amount of housing wealth in the economy affect the ability of households to insure idiosyncratic income risk and thus shifts the market price of risky assets, housing included. In Lustig and Van Nieuwerburgh (2005) the authors present empirical evidence of the relevance of the ratio of housing wealth to human wealth for returns of stocks. We share with Piazzesi et al. (2005) and Lustig and Van Nieuwerburgh (2005, 2007) the same focus on the equilibrium properties of housing rents and the risk premia. In Lustig and Van Nieuwerburgh (2008), the authors extend their framework to consider risk sharing across regions. Empirical evidence indicates that the amount of housing wealth in each region affects the sensitivity of local consumption to local income. This paper is particularly close to ours because there are several locations. However, they assume exogenous location choice and that housing supply is perfectly elastic in all locations (and hence the rent only depend on aggregate shocks).

---

<sup>9</sup>Englund, Hwang and Quigley (2002) report similar computations for Sweden, Iacoviello and Ortalo-Magné (2003) for the UK, and LeBlanc and Lagarenne (2004) for France. Note that every one of these papers considers the stock market as a whole and so ignores the covariance between housing and specific stocks.

Our approach to the modeling of housing as access to a location follows from the tradition of urban economics. Our location choice model follows the standard multi-cities framework of Rosen (1979) and Roback (1982) where residential properties provide access to the local labor market and locations are differentiated by potential surplus. As in Rosen and Roback and the many more recent papers that build on this framework (e.g., Gyourko and Tracy, 1991, Kahn, 1995, Glaeser and Gyourko, 2005), we assume households face a unit housing consumption requirement and derive utility from consumption of numeraire only.

Because we are concerned with portfolio choice in a dynamic environment, we assume households are risk averse. Risk aversion in the face of stochastic streams of income and rent provides a motivation for ownership of local residential properties – homeownership – in our model. This approach builds on the work of Ortalo-Magné and Rady (2002), Sinai and Souleles (2005), Hilber (2005), Davidoff (2006) and others who provide evidence of the relevance of such motivation for housing investment.

It is beyond the scope of this paper to review the vast literature concerned with the determinants of housing prices. Typically in this literature, real estate prices are determined by a perfectly elastic supply function (Lustig and Van Nieuwerburgh, 2008) or by a perfectly elastic demand function (Davis and Heathcote, 2003, Davis and Ortalo-Magné, 2007, Gyourko, Mayer and Sinai, 2006, Kiyotaki, Michaelides and Nikolov, 2007, Van Nieuwerburgh and Weil, 2007).

## 2 Model

### 2.1 Geography and population

Consider an overlapping generation economy where a mass 1 of agents is born in every period. Each agent in the  $t$ -cohort is born at the beginning of period  $t$ , lives for  $S$  periods, and dies at the beginning of period  $t + S$ . Hence, at every time  $t$ , there is a mass  $S$  of agents alive in the economy.

There are  $L$  cities, denoted with index  $l = 1, \dots, L$  and a countryside denoted with index  $l = 0$ . City  $l$  has an exogenously given mass of houses. For convenience let  $n^l$  be the mass of houses per cohort that will be active on the housing market so that total supply of housing in city  $l$  equals  $S \times n^l$ . We assume that housing supply is scarce in cities:

$$\sum_{l=1}^L n^l < 1;$$

but it is abundant once the countryside is included:

$$\sum_{l=0}^L n^l > 1.$$

Each house accommodates exactly one agent.

## 2.2 Production

The income of a person who lives in the countryside is (normalized to) zero. Productivity in city  $l$  follows the process

$$y_t^l = y_{t-1}^l + \tau_t^l$$

where  $\tau_t^l$  is a random variable, independently and identically distributed across time. We discuss the covariance of these shocks below in the Random Shock Structure section.

At birth, each agent draws:

- a vector of city-specific endowment surplus,  $\boldsymbol{\varepsilon} = [\varepsilon^l]^{l=1, \dots, L}$ , with  $\varepsilon^l \in (-\infty, \infty)$ .
- a matrix of city and age specific insulation parameters:  $\boldsymbol{\rho} = [\rho_s^l]_{s=0, \dots, S}^{l=1, \dots, L}$ , with  $\rho_s^l \in [0, 1]$ . Assume  $\rho_0^l = 0$  for all  $l$ .

The parameters  $(\boldsymbol{\varepsilon}, \boldsymbol{\rho})$  are i.i.d across generations. Their joint distribution within a generation is left in a general form  $\phi(\boldsymbol{\varepsilon}, \boldsymbol{\rho})$ , with the only requirement that it should be continuous and have full support. The last assumption guarantees that in equilibrium there will exist at least one resident (the *marginal resident*) who, given the equilibrium vector of prices and rents, is indifferent between living in all the possible locations.

An agent's income equals his product. At time  $t + s$ , the income of an agent living in city  $l$ , born at time  $t$ , with parameters  $(\boldsymbol{\varepsilon}, \boldsymbol{\rho})$  is

$$y_{t,t+s}^l(\boldsymbol{\varepsilon}^l, \boldsymbol{\rho}^l) = y_{t-1}^l + \varepsilon^l + \sum_{m=0}^s (1 - \rho_m^l) \tau_{t+m}^l,$$

for  $s = 0, \dots, S - 1$  (note the difference between  $y_t^l$ , a city-wide variable, and  $y_{t,t+s}^l(\boldsymbol{\varepsilon}^l, \boldsymbol{\rho}^l)$  an individual specific variable). Hence, the income of each agent can be decomposed into a permanent part, which captures the initial productivity of the agent in his location and a time-dependent part, which is determined by the local productivity shocks in the city and that agent's sensitivity to his city's shocks. We call  $\varepsilon^l$  the *city-agent effect* and  $\rho_s^l$  the *shock insulation effect*. We represent below the income earned by an agent born at time  $t$ , living in city  $l$ , for each of the first three years of his life.

$$\begin{aligned} y_{t,t}^l(\boldsymbol{\varepsilon}^l, \boldsymbol{\rho}^l) &= \overbrace{\varepsilon^l}^{\text{city-agent effect}} + \overbrace{y_t^l}^{\text{city-cohort effect}} ; \\ y_{t,t+1}^l(\boldsymbol{\varepsilon}^l, \boldsymbol{\rho}^l) &= \overbrace{\varepsilon^l}^{\text{city-agent effect}} + \overbrace{y_t^l}^{\text{city-cohort effect}} + \overbrace{(1 - \rho_1^l) \tau_{t+1}^l}^{\text{year 1 catch-up}} ; \\ y_{t,t+2}^l(\boldsymbol{\varepsilon}^l, \boldsymbol{\rho}^l) &= \overbrace{\varepsilon^l}^{\text{city-agent effect}} + \overbrace{y_t^l}^{\text{city-cohort effect}} + \overbrace{(1 - \rho_1^l) \tau_{t+1}^l}^{\text{year 1 catch-up}} + \overbrace{(1 - \rho_2^l) \tau_{t+2}^l}^{\text{year 2 catch-up}} . \end{aligned}$$

Similar formulations determine the agent’s earnings until he reaches age  $S - 1$ .<sup>10</sup> At age  $S$ , we assume the agent does not earn anything. It is mathematically convenient to set  $\rho_S = 0$  for all agents even if it is irrelevant to the agents’ earnings.

The city-agent effect is a standard object in multi-city models with heterogeneous agents. Depending on their human capital, agents face different earning opportunities in different locations.

The shock-insulation effect captures two economic phenomena. First, agents may be exposed to a technological cohort-specific effect (documented by Goldin and Katz, 1998). The human capital of certain people, especially the young, may be more flexible. When a technological innovation appears, the income of certain agents will be more affected than the income of others. Second, certain agents – like senior workers and public sector workers – may be part of an implicit labor insurance agreement. Their wage is more insulated from productivity shocks.

It is reasonable – but not strictly necessary for the analysis – to assume that the insulation parameter, for a shock that occurs at a given age, is increasing in the age of the agent:  $\rho_{s+1}^l > \rho_s^l$ . Of course the two extreme cases are full insulation ( $\rho_s^l = 1$ ) and full exposure ( $\rho_s^l = 0$ ).<sup>11</sup>

For concreteness, we interpret  $y_{t,t+s}^l$  as monetary income, but there exists an alternative interpretation in terms of non-monetary benefits that is equivalent from a mathematical standpoint. The term  $y_{t,t+s}^l$  is now viewed as a money-equivalent of the utility afforded by the amenities present in location  $l$ . In turn the utility can be decomposed into an agent-city effect (taste for that particular location) and a shock component (perhaps an environmental or a social risk) multiplied by the agent’s sensitivity to that type of shock. Of course, the model can also be interpreted as a mix of monetary and non-monetary benefits.

At birth, every agent chooses in what city (or the countryside) to live. He cannot move afterwards. If an agent lives and thus produces in city  $l$ , he must rent exactly one unit of housing.

### 2.3 Housing market

The market rent in city  $l$  at time  $t$  is denoted with  $r_t^l$  and will be determined in equilibrium. The housing market is frictionless. There are no transaction costs associated with renting,

---

<sup>10</sup>The structure of  $\varepsilon$  and  $\rho$  could be much more complex than the one we have here and still be amenable to analysis in the present mean-variance set-up. For instance, we could imagine that the city-agent effect is not constant over the life of the agent but it follows a random walk. Also, we could assume that the extent to which a shock that occurs at age  $s$  affect future incomes depends on the age of the agent.

<sup>11</sup>We find it natural to restrict  $\rho_s^l$  to be between zero and one, but our mathematical analysis is valid even if  $\rho_s^l > 1$  (the agent’s productivity is negatively correlated to local shocks) and  $\rho_s^l < 0$  (the agent is over-exposed to local shocks).

buying or selling property. In particular there is no difference between living in a owned or a rented house.

Agents may invest in divisible shares of any city's housing stock and revise their decision at every period. Let  $a_{t,t+s}^l$  denote the amount of housing of city  $l$  owned by an agent born at time  $t$  of age  $s$ .

The market price of a unit of housing in city  $l$  at time  $t$  is  $p_t^l$ . The agent revises his housing investment at the beginning of every period. For accounting purposes, imagine that the agent liquidates all his housing assets and then buys the desired amount in each period. At the beginning of period  $t+s$ , the agent acquires  $a_{t,t+s}^l$  units in city  $l$  at total cost  $a_{t,t+s}^l p_{t+s}^l$ . During period  $t$ , the agent collects rent on his housing investment for a total of  $a_{t,t+s}^l r_{t+s}^l$ . At the beginning of the next period, the agent liquidates the housing investment and receives  $a_{t,t+s}^l p_{t+s+1}^l$ . We denote  $\mathbf{a}_{t,t+s}$  the vector of the agent's housing investments,  $\mathbf{a}_{t,t+s} = [a_{t,t+s}^l]_{l=1,\dots,L}$ .

Given the frictionless nature of the housing market, the creation of derivative securities would be superfluous. In particular, Case-Shiller home price indices for our cities (a security bought at time  $t$  which pays a price  $p_{t+1}^l$  at time  $t+1$ ) would be equivalent to purchasing housing for one period, net of the "rent coupon".<sup>12</sup>

## 2.4 Stock Market

Besides housing, there is another class of securities, which we call stocks. These are claims on productive assets, which – as in regular asset pricing models – produce an exogenous (but stochastic) stream of income. There are  $Sz^k$  units of type- $k$  asset, with  $k \in \{1, \dots, K\}$  and  $z^k > 0$ . A unit of stock  $k$  produces dividend  $d_t^k$  at time  $t$ . The dividend follows the stochastic process:

$$d_t^k = d_{t-1}^k + \nu_t^k$$

where  $\nu$  is i.i.d. across time (and the probability distribution will be discussed below).

As for housing, every agent can buy units of every stock and revise his portfolio allocation in every period. The market price of stock  $k$  at a given point in time is  $q_t^k$ . At the beginning of period  $t+s$ , the agent acquires  $b_{t,t+s}^k$  units of stock  $k$  at total cost  $b_{t,t+s}^k q_{t+s}^k$ . During period  $t+s$ , the agent receives dividend on his investment in  $k$  for a total of  $b_{t,t+s}^k d_{t+s}^k$ . At the beginning of the next period, the agent liquidates the stock investment and receives  $b_{t,t+s}^k q_{t+s+1}^k$ . We denote  $\mathbf{b}_{t,t+s}$  the vector of the agent's stock investments,  $\mathbf{b}_{t,t+s} = [b_{t,t+s}^k]_{k=1,\dots,K}$ .

---

<sup>12</sup>Given the random-walk nature of all our shocks, long-term securities are also redundant because they can be replicated by sequences of short-term investments. This includes long-term rentals or futures on real estate.

## 2.5 Distribution of Random Shocks

There are two sources of exogenous shocks in our economy: a vector  $\boldsymbol{\tau}$  of local productivity shocks and a vector  $\boldsymbol{\nu}$  of capital productivity shocks. The shocks are independently and identically distributed over time, according to a normal distribution with mean 0 and covariance matrix  $\boldsymbol{\Sigma}$ :  $(\boldsymbol{\tau}_t, \boldsymbol{\nu}_t) \sim N(0, \boldsymbol{\Sigma})$ .

It is important that we allow for correlation between local shocks and dividends. A certain industry may be more affected by shocks in a certain market and viceversa. We also allow for correlation of shocks across cities.

## 2.6 Consumption and Savings

As the goal of this paper is to arrive at a mean-variance closed-form expression for asset prices, we assume that agents derive CARA utility  $-\exp(-\gamma w)$  from wealth at the end of their life,  $w$ , where  $\gamma$  is the standard risk-aversion parameter.

Agents face no credit constraints and can borrow and lend freely at discount rate  $\beta \in (0, 1)$ . For simplicity, we assume that agents are born with no wealth (this does not affect their decisions, given that they have CARA preferences).

## 2.7 Non-Negativity Constraints

Asset pricing models with normally distributed shocks suffer from a well-known technical problem. As the value of the dividends can become negative, agents may find themselves in situations where they would want to dispose of assets they own. If they could, the distribution of asset values would no longer be normal and the model would not be tractable. Hence, all models in this class assume, implicitly or explicitly, that agents cannot dispose of assets. Typically, this assumption is unrealistic because in practice both agents and firms are protected by limited liability. Instead, in the model stocks can have negative prices, and their owners must pay to get rid of them.

Our CARA-normal set-up inherits this non-negativity problem. In particular, the productivity in a city could become negative and house prices there may be negative.<sup>13</sup>

The usual response to this criticism, which applies here as well, is that the unconstrained model should be viewed as an approximation of the model with non-negativity constraints, as long as the starting values are sufficiently far from zero.

## 2.8 Timing

To recapitulate, the order of moves, for an agent born at time  $t$  is as follows:

---

<sup>13</sup>We assume that homeowners have an obligation to rent their property (they pay a large fine if it is vacant).

1. At birth, the agent chooses in which location  $l$  he will spend the rest of his life.
2. At the beginning of each period  $t + 0, \dots, t + S$ , the agent learns the values of the random shocks for that period,  $\boldsymbol{\nu}_{t+s}$  and  $\boldsymbol{\tau}_{t+s}$ .
3. For  $s = 0, \dots, S - 1$ , at the beginning of period  $t + s$  the agent revises his housing and stock investments ( $\boldsymbol{a}_{t,t+s}$  and  $\boldsymbol{b}_{t,t+s}$ ).
4. At  $t + s$ , the agent also pays rent  $r_{t+s}^l$  for one unit of housing in the location where he lives. He collects dividends and rents on the assets that he owns.
5. At the end of his life, at time  $t + S$ , the agent liquidates his investments ( $\boldsymbol{a}_{t,t+S-1}$  and  $\boldsymbol{b}_{t,t+S-1}$ ) and consumes the wealth that he has accumulated.<sup>14</sup>

### 3 Analysis

An equilibrium is an allocation of households across cities, a vector of optimal portfolio holdings of housing and stocks for each agent, housing rents and prices for each city and stock prices such that: (i) The location choice and portfolio holdings solve the agents' problem; (ii) The housing markets in each city clear; (iii) The stock markets clear.

A *stationary equilibrium* is an equilibrium where the mass of agents of a generation  $t$  who live in a given city  $l$  is the same across generations.<sup>15</sup>

Define a *linear equilibrium* as an equilibrium where stock prices, rents, and house prices can be expressed respectively as:

$$q_t^k = \frac{1}{1 - \beta} d_t^k - \bar{q}^k; \quad (1)$$

$$r_t^l = y_t^l + \bar{r}^l; \quad (2)$$

$$p_t^l = \frac{1}{1 - \beta} r_t^l - \bar{p}^l; \quad (3)$$

where  $\bar{\boldsymbol{q}} = [\bar{q}^k]^{k=1, \dots, K}$ ,  $\bar{\boldsymbol{p}} = [\bar{p}^l]^{l=1, \dots, L}$  are price discounts and  $\bar{\boldsymbol{r}} = [\bar{r}^l]^{l=1, \dots, L}$  is a rent premium to be determined in equilibrium. The rent is equal to local productivity plus a local constant. House and stock prices are equal to the discounted value of a perpetuity that pays the current rent or dividend minus an asset-specific discount.

<sup>14</sup>The agent does not work or pay rent in the last period of his life ( $t + S$ ). He consumes his wealth in the beginning of the period and he dies.

<sup>15</sup>A non-stationary equilibrium would have the following structure. As agents cannot move after they locate to city  $l$ , the stock of rented accommodation used by the  $t$ -cohort will not become available until members of the  $t$ -cohort die at the end of  $t + S$ . Hence, if the  $t$ -cohort is, say, over-represented, then the  $t + S + 1$ -cohort will be equally over-represented. The non-stationary equilibria are characterized by cycles of length  $S + 1$ .

Price discounts can also be interpreted as expected returns of zero-cost portfolios.<sup>16</sup> Throughout the analysis we describe  $\bar{p}^l$  and  $\bar{q}^k$  as price discounts or expected returns, depending on the context.

Our strategy for finding equilibria is as follows. We start by conjecturing that we are in a stationary linear equilibrium. We postulate a feasible allocation of agents to cities and we solve the portfolio problem of a generic agent living in a given city. As it turns out, solving this agent problem is enough to characterize analytically stock prices and house prices up to a vector of city-specific constants. With this information, we compute the expected utility of every agent conditional on city choice. We determine aggregate location demand given any price vector by comparing expected utilities across cities. Finally, we turn to the marginal resident. We show that for every vector of city-specific constants there exists an agent who is indifferent among all locations, while all others have strict preferences. The characteristics of the marginal resident are monotonic in the vector of city-specific constants, and we can identify the marginal agent such that the mass of agents who move to each city equals the local housing supply. This proves that that our initial conjecture on linear prices was correct.<sup>17</sup>

As agents have CARA preferences, their lifetime utility can be decomposed into:

$$E \left[ u_t^l \right] = E \left[ w_t^l \right] - \gamma V \left[ w_t^l \right].$$

The following proposition re-writes the two components of the agents utility and uses them to compute his optimal portfolio choice and his expected utility (in what follows we focus on one agent and we drop the argument representing the agent-specific characteristics:  $(\varepsilon, \rho)$ ).

**Proposition 1 (Portfolio Allocation)** *Suppose that prices and rents are given by equations (1), (2), and (3), with given  $\bar{r}$ 's,  $\bar{q}$ 's and  $\bar{p}$ 's. Consider any allocation of agents to cities. Consider an agent born at period  $t$  characterized by a vector  $\varepsilon$  and a matrix  $\rho$ . If this agent lives in  $l$  and chooses investment profiles  $[\mathbf{a}_{t,t+s}, \mathbf{b}_{t,t+s}]_{s=0,\dots,S-1}$ , the expectation*

---

<sup>16</sup>For instance, the expected return of a zero-cost one-unit portfolio invested in housing in city  $l$  (evaluated in today's dollars) is

$$E \left[ \beta p_{t+1}^l - (p_t^l - r_t^l) \right] = \frac{\beta}{1-\beta} r_t^l - \beta \bar{p}^l - \frac{\beta}{1-\beta} r_t^l + \bar{p}^l = (1-\beta) \bar{p}^l.$$

<sup>17</sup>It is tempting to consider the two first parts of the analysis, portfolio choice and asset pricing, in isolation. But they are only valid if the third part is present too. If one assumed a different location model or an exogenous allocation of agents to cities, the three price processes in (1), (2), and (3) would be different and Propositions 1 and 2 would no longer hold. For instance, if agents could move between cities during their lifetime, it is not clear that the rent the price in city  $l$  would depend only on productivity in city  $l$ .

We see this as both a weakness and a strength of spatial asset pricing. On the one hand, one cannot have a meaningful discussion about real estate prices in multiple locations without a spatial model in the background. On the other hand, this opens the door to a wealth of testable implications encompassing spatial and financial variables.

and the variance of his end-of-life wealth can be written respectively as:

$$E[w_t] = \sum_{s=0}^{S-1} \beta^{s-S} \left( \varepsilon^l - \bar{r}^l + (1-\beta) \left( (1-\beta^{S-s-1}) \rho_{s+1}^l \bar{p}^l + \sum_{j=1}^L \tilde{a}_{t,t+s}^j \bar{p}^j + \sum_{k=1}^K b_{t,t+s}^k \bar{q}^k \right) \right)$$

$$Var[w_t] = \frac{\beta^2}{(1-\beta)^2} \sum_{s=0}^{S-1} \beta^{2(s-S)} Var \left[ \sum_{j=1}^L \tilde{a}_{t,t+s}^j \tau_{t+s+1}^j + \sum_{k=1}^K b_{t,t+s}^k \nu_{t+s+1}^k \right]$$

where

$$\tilde{a}_{t,t+s}^j = \begin{cases} a_{t,t+s}^l - (1-\beta^{S-s-1}) \rho_{s+1}^l & \text{if } j = l \\ a_{t,t+s}^j & \text{otherwise} \end{cases}.$$

The agent's optimal investment profile is given by

$$\begin{bmatrix} \tilde{\mathbf{a}}_{t,t+s} \\ \mathbf{b}_{t,t+s} \end{bmatrix} = \frac{(1-\beta)^3}{2\gamma\beta^{s+2}} \beta^S \boldsymbol{\Sigma}^{-1} \begin{bmatrix} \bar{\mathbf{p}} \\ \bar{\mathbf{q}} \end{bmatrix},$$

for  $s = 0, \dots, S-1$ , and his expected log-utility is

$$U^l = \frac{1}{\beta^S} \sum_{s=0}^{S-1} \beta^s \left( \varepsilon^l - \bar{r}^l + (1-\beta) (1-\beta^{S-s-1}) \rho_{s+1}^l \bar{p}^l \right) + S \frac{(1-\beta)^4}{4\gamma\beta^2} \begin{bmatrix} \bar{\mathbf{p}} \\ \bar{\mathbf{q}} \end{bmatrix}' \boldsymbol{\Sigma}^{-1} \begin{bmatrix} \bar{\mathbf{p}} \\ \bar{\mathbf{q}} \end{bmatrix}.$$

Proposition 1 says that the optimal portfolio of any agent can be decomposed into:

- Investment in a mutual fund that contains all stocks and houses in all cities, with weights  $(\tilde{\mathbf{a}}, \mathbf{b})$ . The mutual fund is the same for all agents. All agents within a cohort buy the same amount of mutual fund shares (but older agents buy more shares, purely because of the discount rate  $\beta$ ). Given a vector of expected returns (which for now is still exogenous), the weights  $(\tilde{\mathbf{a}}, \mathbf{b})$  that the mutual fund puts on various stocks and real estate assets are given by a standard CAPM allocation. The portfolio puts more weight on an asset if its returns are less correlated to other assets and they have a higher expected value.
- Demand for real estate in the city where the agent lives, driven by a desire to hedge shocks to disposable income due to rent fluctuations. As the price of a house is linear in the rent, a house in a certain city is a perfect hedge against rent fluctuations in that city. The hedging demand is given by  $(1-\beta^{S-s}) \rho_{s+1}^l$ . Hence, it depends on how well the agent is insulated from local productivity shocks at time  $t$ . The hedging demand varies across agents and across time for a given agent (the cross-sectional and life-cycle implications of this are explored in detail in the Discussion section). However, the hedging demand does not depend on the expected return of real estate in that city (if a city has a high return, that will be reflected in the mutual fund share only).<sup>18</sup>

<sup>18</sup>Davis and Willen (2000) obtain a related result (Proposition 1 in their paper) on the decomposition of the optimal portfolio of agents who face labor risk into a speculative component and a hedging component.

Now that we have solved the portfolio allocation problem for any given vector of premia, we can find the equilibrium expected returns. Denote any (measurable) allocation of agents to cities with the indicator function  $I_{\varepsilon, \rho}^l$ , which takes value 1 if agents with personal characteristics  $\varepsilon$  and  $\rho$  locate to city  $l$ , and zero otherwise (such that  $\sum_{l=0}^L I_{\varepsilon, \rho}^l = 1$  for all  $\varepsilon$  and  $\rho$ ).

**Proposition 2 (Asset Pricing)** *Suppose that rents are given by equations (2), with given  $\bar{r}$ 's. Consider any allocation of agents to cities. Then, prices are given by equations (1) and (3) with discounts:*

$$\begin{bmatrix} \bar{p} \\ \bar{q} \end{bmatrix} = 2\gamma S \frac{\beta}{(1-\beta)^2 (1-\beta^S)} \Sigma \begin{bmatrix} \mathbf{n} - \mathbf{R} \\ \mathbf{z} \end{bmatrix},$$

where  $\mathbf{R} = [R^1, \dots, R^L]'$  and

$$R^l = \frac{1}{S} \sum_{s=0}^{S-1} (1 - \beta^{S-s-1}) \int_{\varepsilon} \int_{\rho} I_{\varepsilon, \rho}^l \rho_{s+1}^l \phi(\varepsilon, \rho) d\varepsilon d\rho.$$

Houses and stocks are priced based on their contribution to systemic risk according to a classical CAPM formula. Proposition 2 finds the correct definition of systemic risk for this model. The weights of stocks in the market portfolio correspond to the quantity of stocks available, as in the regular CAPM. However, the weights of real estate are reduced by the total hedging demand. Namely, the weight of houses in city  $l$  is equal to the mass of homes  $n^l$  minus the integral of the hedging demand by residents of  $l$ :  $R^l$ .

To explore the pricing expressions in Proposition 2 further, define the *adjusted market portfolio*  $M$  as a portfolio allocation that includes

$$\begin{aligned} & \frac{n^l - R^l}{Q} \text{ units of housing in city } l \text{ for every city } l \\ & \frac{z^k}{Q} \text{ units of stock } k \text{ for every stock } k \end{aligned}$$

with  $Q = \sum_{l=1}^L (n^l - R^l) + \sum_{k=1}^K z^k$ . The mutual fund that all agents buy contains the adjusted market portfolio.

Denote the expectation and the variance of the adjusted market portfolio, respectively, with  $\bar{p}^M$  and  $Var(M)$ . Define  $Cov(l, M)$  as the covariance between the return of real estate in city  $l$  and the return of  $M$ . For every stock  $k$  define  $Cov(k, M)$  similarly. Then:

**Corollary 3** *The expected return of real estate in city  $l$  is given by*

$$\bar{p}^l = \frac{Cov(l, M)}{Var(M)} \bar{p}^M,$$

and the expected return of stock  $k$  is

$$\bar{p}^k = \frac{Cov(k, M)}{Var(M)} \bar{p}^M.$$

The expression in the Corollary is akin to the classical CAPM pricing formula where  $\frac{Cov(l,M)}{Var(M)}$  is a beta-factor for housing in city  $l$ . The main innovation in our setting lies in the identification of the adjusted market portfolio, for which this formula is true.<sup>19</sup>

Propositions 1 and 2 are really intermediate results. They rest on a specific conjecture about the stochastic process that determines local market rents, described in equations (2). But rents are not primitives and we must now check that for the location model used here the conjecture is in fact correct. It is useful to reiterate that the conjecture would in general not extend to other location models, implying that propositions 1 and 2 are only valid if accompanied by the specific spatial allocation model that we have chosen.

Besides closing the fixed-point argument, we also need to determine the vector of rent premia  $\bar{\mathbf{r}}$ , and to find the vector of hedging demands  $\mathbf{R}$ .

For an agent with personal characteristics  $(\boldsymbol{\varepsilon}, \boldsymbol{\rho})$ , the log-utility of locating in city  $l$  is given by  $U$  in Proposition 1, where now  $\bar{\mathbf{p}}$  and  $\bar{\mathbf{q}}$  are defined in terms of primitives through Proposition 2. For every  $(\boldsymbol{\varepsilon}, \boldsymbol{\rho})$ , let

$$\bar{u}^l(\boldsymbol{\varepsilon}, \boldsymbol{\rho}) \equiv \varepsilon^l + \frac{(1-\beta)^2}{1-\beta^S} \bar{p}^l \sum_{s=1}^S (1-\beta^{S-s-1}) \rho_s^l.$$

with the utility of being in the countryside:  $\bar{u}^0(\boldsymbol{\varepsilon}, \boldsymbol{\rho}) = \bar{u}^0$ .<sup>20</sup> Also let

$$\bar{U} = S \frac{(1-\beta)^4}{4\gamma\beta^2} \begin{bmatrix} \bar{\mathbf{p}} \\ \bar{\mathbf{q}} \end{bmatrix}' \boldsymbol{\Sigma}^{-1} \begin{bmatrix} \bar{\mathbf{p}} \\ \bar{\mathbf{q}} \end{bmatrix}.$$

Then, we can write the utility of locating in city  $l$  as<sup>21</sup>

$$U^l = \frac{1-\beta^S}{1-\beta} \left( \bar{u}^l(\boldsymbol{\varepsilon}, \boldsymbol{\rho}) - \bar{r}^l \right) + \bar{U}.$$

Namely, the agent's utility can be decomposed into a component that is common to all agents (and depends on investment in the mutual fund) and an agent-specific component that depends on the city-agent effect  $\varepsilon^l$  and the shock-insulation vector  $\boldsymbol{\rho}^l$  that the agent faces is he chooses to locate in city  $l$ .

A given agent locates in city  $l$  if and only if  $U^l = \max_m U^m$ . For every  $L$ -vector  $\hat{\mathbf{r}}$ , we can write the aggregate demand for location  $l$  as

$$\nu^l(\hat{\mathbf{r}}) = \int_{(\boldsymbol{\varepsilon}, \boldsymbol{\rho}) : \bar{u}^l(\boldsymbol{\varepsilon}, \boldsymbol{\rho}) - \hat{r}^l = \max_m (\bar{u}^m(\boldsymbol{\varepsilon}, \boldsymbol{\rho}) - \hat{r}^m)} \phi(\boldsymbol{\varepsilon}, \boldsymbol{\rho}) d(\boldsymbol{\varepsilon}, \boldsymbol{\rho}).$$

<sup>19</sup>For instance, if one defined the market portfolio without the  $-R$  correction, such beta representation would not be valid.

<sup>20</sup>Assuming that  $\varepsilon^0$  is without loss of generality. If it was not, one could re-define all the  $\varepsilon$ 's as differences with  $\varepsilon^0$ .

<sup>21</sup>To see this, note that:

$$\frac{1-\beta}{1-\beta^S} \sum_{s=0}^{S-1} \beta^s \left( \varepsilon^l + (1-\beta) (1-\beta^{S-s}) \rho_{s+1}^l \bar{p}^l \right) = \varepsilon^l + \frac{(1-\beta)^2}{1-\beta^S} \bar{p}^l \sum_{s=1}^S (1-\beta^{S-s+1}) \rho_s^l$$

We obtain:

**Proposition 4 (Location Choice)** *There is a unique linear stationary equilibrium. In it, an agent with personal characteristics  $(\varepsilon, \rho)$  locates in city  $l$  if and only if*

$$\bar{u}^l(\varepsilon, \rho) - \bar{r}^l = \max_{j=0, \dots, L} (\bar{u}^j(\varepsilon, \rho) - \bar{r}^j)$$

and  $\bar{r}$  is the unique value of the vector  $\hat{r}$  such that  $\nu^l(\hat{r}) = n^l$  in all cities.

The equilibrium rent in city  $l$  is

$$r_t^l = y_t^j + \bar{r}^l.$$

The most important step in Proposition 4 is the determination of the identity of marginal residents (the agents who are indifferent among all locations). In our location model, the personal characteristics of marginal agents turn out to be constant across cohorts. As the marginal resident indifference condition determines market rents, this means that the local rent processes are the same, but for a constant term, of the local productivity processes, which verifies the linearity assumption in the rent process (2).

Despite the fact that the payoff of an agent in a given city is determined by  $S + 1$  parameters ( $\varepsilon^l$  plus the vector  $\rho^l$ ), the expected utility  $U^l$  of the agent in that city can be condensed into a simple expression containing  $\bar{u}^l(\varepsilon, \rho)$ . For any possible vector of rents  $\hat{r}$ , the demand function  $\nu^l(\hat{r})$  establishes how many agents will live in each location.

Hence, for every vector rent constants  $\hat{r}$ , we identify a set of measure zero of agents (the marginal resident) such that their expected utility is the same in every city and in the countryside:

$$\bar{u}^l(\varepsilon, \rho) - \hat{r}^l = \bar{u}^0 \text{ for all } l.$$

Note that this correspond to multiple personal characteristic profiles: all the vectors  $(\varepsilon, \rho)$  that yield the same  $\bar{u}^l(\varepsilon, \rho)$ . One can show that the vector of expected utilities of the marginal resident in different location is monotonic in the rent constant vector  $\hat{r}$ . This means that the mapping can be inverted: given the identity of the marginal resident, there is only one vector of rents that guarantees that that agent is indeed the marginal resident.

The assumption that the distribution of individual characteristics  $\phi(\varepsilon, \rho)$  has full support guarantees that the demand function is continuous. As the marginal resident determines the vector of location demands, one can find the (unique) marginal resident that guarantees that demand equals supply in every location. This marginal resident is associated to the rent constant vector  $\bar{r}$ . In equilibrium, we have that demand equals supply in every city:

$$\nu(\bar{r}) = n;$$

and that the identity of the marginal residents is given by the set of values  $(\boldsymbol{\varepsilon}, \boldsymbol{\rho})$  such that, given the equilibrium rent vector, the expected utility is the same in every city and in the countryside:

$$\bar{u}^l(\boldsymbol{\varepsilon}, \boldsymbol{\rho}) - \bar{r}^l = 0 \text{ for all } l.$$

A key feature of our location equilibrium is that the characteristics of the marginal resident are cohort-invariant. It is this feature that guarantees that the rent process is linear and that the CAPM characterization is valid. If, for instance, agents could change city, the time-invariance property would not hold and the rent process would not be linear. As a result, the CAPM characterization would fail.

### 3.1 Example

While we obtained closed-form solutions for portfolio decisions and asset premia, Proposition 4 does not express rents in closed form. This is natural as the probability distribution over individual characteristics,  $\phi(\boldsymbol{\varepsilon}, \boldsymbol{\rho})$ , is left in a general form. By making appropriate assumptions over personal characteristics and geography, one can arrive at closed-form expressions for all variables, as the following example illustrates.

Assume that:

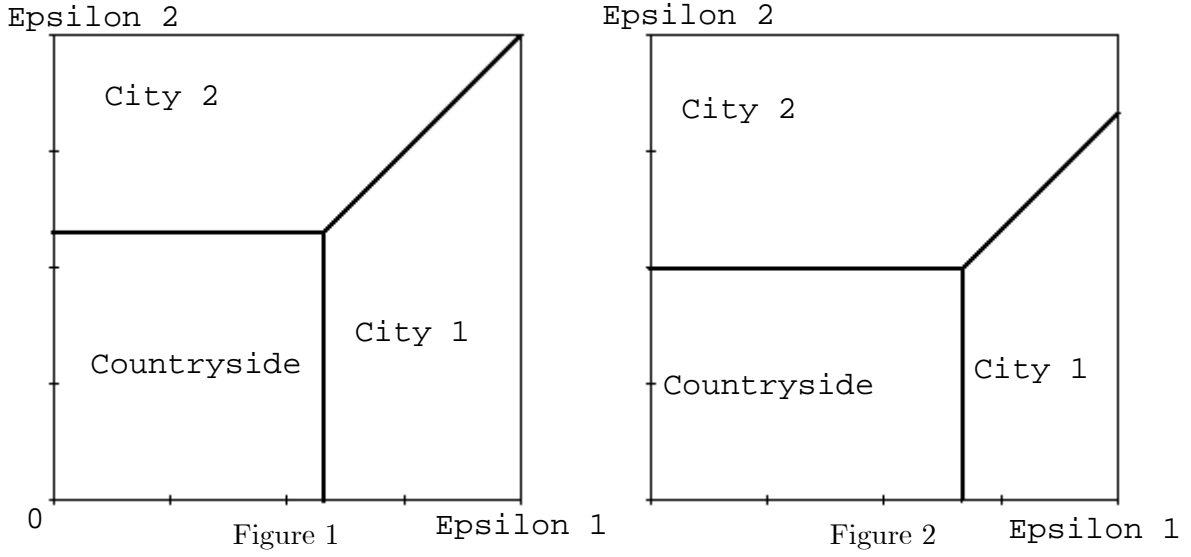
- Agents in each cohort draw city-specific endowments  $\boldsymbol{\varepsilon}$  from a uniform distribution defined over  $[0, 1]^L$  ;
- At each age, all agents face the same city-specific insulation parameter  $[\tilde{\rho}_s^l]_{s=0, \dots, S}^{l=1, \dots, L}$  ;
- All cities have same size:  $n^l = \frac{1}{L}N$  for every  $l$ , with  $N \in (0, 1)$ .

**Proposition 5** *An agent with human capital  $\boldsymbol{\varepsilon}$  locates in city  $l$  if: (i)  $\varepsilon^l = \max_m \varepsilon^m$ ; and (ii)  $\varepsilon^l \geq (1 - N)^{\frac{1}{L}}$ . The equilibrium rent in city  $l$  is*

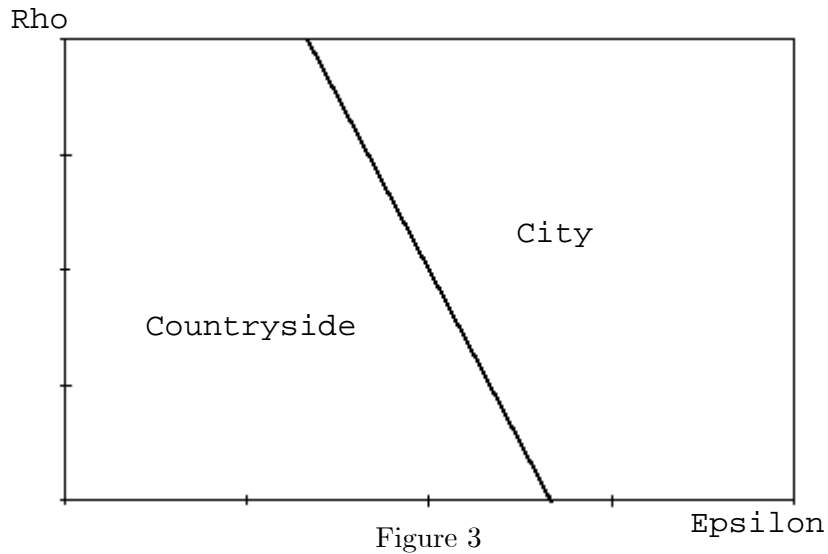
$$r^l = (1 - N)^{\frac{1}{N}} + \frac{(1 - \beta)^2}{1 - \beta^S} \bar{p}^l \sum_{s=1}^S (1 - \beta^{S-s-1}) \tilde{\rho}_s^l.$$

In the special case with two cities only ( $L = 2$ ), we can provide a two-dimensional representation of the equilibrium allocation. If for instance, we assume that  $n^1 = n^2 = \frac{1}{3}$  (and hence  $n^0 = \frac{1}{3}$ ), we have the situation depicted in Figure 1 below. The agents who locate in the countryside are those with a low  $\varepsilon^1$  and a low  $\varepsilon^2$  (the bottom right square region) locate in the countryside. Those who locate in city 1 have  $\varepsilon^1 \geq (1 - N)^{\frac{1}{2}}$  and  $\varepsilon^1 \geq \varepsilon^2$  (bottom right trapezoid). Those who locate in city 2 have  $\varepsilon^2 \geq (1 - N)^{\frac{1}{2}}$  and  $\varepsilon^2 \geq \varepsilon^1$ . The marginal resident is found at the intersection of those three regions.

We can also see what happens when cities have heterogeneous sizes. The general characterization is more complex than the one given in Proposition 5, but one can work out examples. For instance, if  $n^1 = \frac{2}{9}$  and  $n^2 = \frac{4}{9}$  (and hence it is still the case that  $n^0 = \frac{1}{3}$ ), the allocation is depicted in figure 2. The city-1 region is now smaller and the city-2 region greater. The marginal resident is to the South-East of the marginal resident of figure 1.



Another simple case one can study is when there is only one city and agents differ on two dimensions:  $\varepsilon$  and  $\rho$ . Suppose both types are uniformly (and independently) distributed on  $[0, 1]$ . The equilibrium allocation is represented in figure 3.



## 4 Discussion

Our spatial asset pricing model yields a rich set of implications linking spatial and financial variables. We begin this section by discussing cross-sectional and life-cycle implications. We then turn to talent allocation across cities. We explore the pricing of portfolios of stocks and portfolios of real estate. We conclude with a short discussion of how the model can be extended to include economies of agglomeration and frictions in the housing market.

### 4.1 Returns on Housing across Cities

Our model yields predictions on cross-sectional differences in real estate returns (Proposition 2 and Corollary 3). To get a qualitative feel for those predictions, consider a simple benchmark: assume that shocks across cities are uncorrelated and suppose there are no stocks. Let  $Var(\tau^l) = \sigma_l^2$ . Proposition 2 yields

$$\bar{p}^l = 2\gamma \frac{\beta}{(1-\beta)^2(1-\beta^S)} \sigma_l^2 (n^l - R^l).$$

The expected return in a city is an increasing function of the variance of shocks in that city and of the outstanding real estate stock  $n^l - R^l$ . In turn, the latter is a decreasing function of the average shock insulation parameter ( $R^l$ ) in that city. The value of  $R^l$  is determined in equilibrium.

Consider a location that specializes in an industry and thus with low shock-insulation parameters: All residents, whether old or young, are affected by industry productivity shocks in the same way. The residents have a low demand for housing for hedging purposes. The city's homeownership rate is low, and so are prices. On the contrary, a city centered around an industry with high shock-insulation parameters – perhaps a high-tech industry where the old struggle to catch up with innovation or a highly protected sector, where older workers face implicit insurance – will display a high hedging demand for housing, high homeownership rates, and high prices at "equal rents."

### 4.2 Home Ownership over the Life Cycle

The model also yields intertemporal predictions on home-ownership rates. We know from Proposition 1 that housing demand for hedging purposes depends on the shock-insulation parameter, which in turn varies with age. The hedging demand by someone at age  $s$  anticipating a shock-insulation parameter the following period of  $\rho_{s+1}^l$  is

$$D_s^l = (1 - \beta^{S-s-1}) \rho_{s+1}^l.$$

Suppose the parameters  $\rho_s^l$  are determined by a differentiable function  $g(s)$  defined over the positive real line. Suppose that the covariance of an agent's earnings with the earnings of

the young marginal newcomers in his city decrease with age; i.e.,  $g'(s) < 0$ . Then, abusing notations for ease of exposition, we write the change in hedging demand for local home ownership with age as follows:

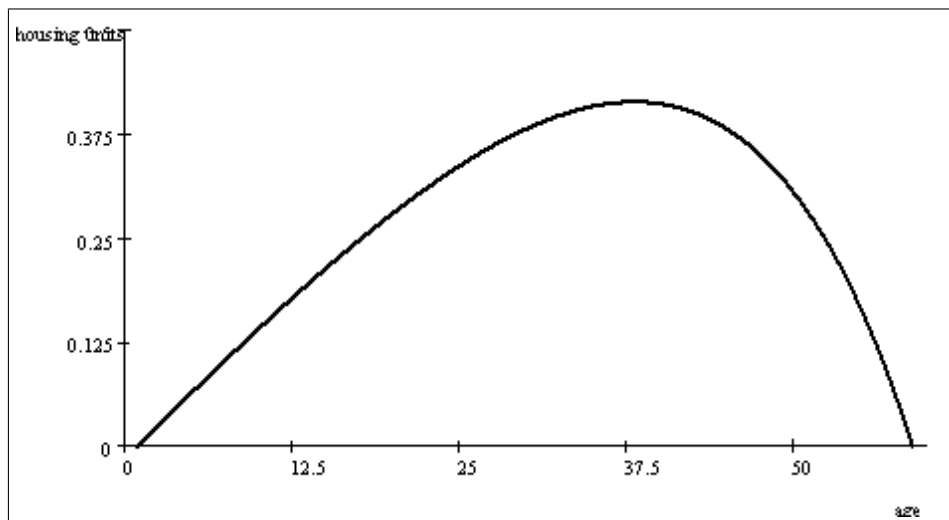
$$\frac{d}{ds}D_s^l = (1 - \beta^{S-s-1})g'(s) + \log \beta \cdot \beta^{S-s-1}g(s)$$

The first term represents the increasing insurance demand as the agent gets older due to  $\rho$  decreasing with age. The second term is the effect of the decreasing number of periods of life as the agent gets older. The first term is increasing with age, the second term is declining with age. Next we ask under what conditions do these two effects generate a hump-shaped pattern for homeownership by looking at the following second derivative:

$$\frac{d^2}{ds^2}D_s^l = (1 - \beta^{S-s-1})g''(s) + 2\log \beta \cdot \beta^{S-s-1}g'(s) - (\log \beta)^2 \cdot \beta^{S-s-1}g(s)$$

A sufficient condition for this expression to be negative is that  $g''(s)$  be negative.

If one assumes that the shock-insulation parameter can be written as  $\rho_s^l = k \frac{s-1}{S-1}$ , with  $k \in [0, 1]$  (implying  $\rho_1^l = 0$  and  $\rho_s^l$  linearly increasing in age). For instance, if  $\beta = 0.95$ ,  $S = 60$ , and  $k = 1$ , the hedging demand over the life-cycle is plotted in the graph below.



This result offers another explanation – alternative to credit constraints – for why homeownership rates should be lower for younger people. When young, households do not need much insurance against rent shocks because their earnings provides such insurance. As they get older earnings provide less insurance, their hedging demand for homeownership increases. Against this force is the fact that as agent gets older, the number of remaining periods of life decreases, reducing the demand for insurance; this last point was made by Sinai and Souleles (2005) who also provide evidence of its empirical relevance.

### 4.3 Talent Allocation

Does our market equilibrium have the potential to create productive inefficiency?

Let us begin by defining and characterizing productive efficiency in this context. Let the economy's total product at time  $t$  be

$$Y_t = \sum_{l=1}^L \int_{(\boldsymbol{\varepsilon}, \boldsymbol{\rho}): \bar{u}^l(\boldsymbol{\varepsilon}, \boldsymbol{\rho}) - \bar{r}^l = \max_m (\bar{u}^m(\boldsymbol{\varepsilon}, \boldsymbol{\rho}) - \bar{r}^m)} y_{t,t+s}^l(\boldsymbol{\varepsilon}^l, \boldsymbol{\rho}^l) \phi(\boldsymbol{\varepsilon}, \boldsymbol{\rho}) d(\boldsymbol{\varepsilon}, \boldsymbol{\rho}).$$

Suppose a planner wishes to maximize the expected discounted sum of future total products

$$Y = \sum_{s=0}^{\infty} \beta^s E[Y_{t+s}].$$

We begin by characterizing the solution of the production maximization problem:

**Proposition 6** *The allocation of agents to cities that maximizes  $Y$  depends only on  $\boldsymbol{\varepsilon}$  not on  $\boldsymbol{\rho}$ : An agent with  $\boldsymbol{\varepsilon}$  locates in city  $l$  if  $\varepsilon^l - \bar{\varepsilon}^l = \max_m \varepsilon^m - \bar{\varepsilon}^m$ , where  $\bar{\boldsymbol{\varepsilon}}$  is the unique vector that guarantees that the mass of agents in every city equals housing supply.*

Next, we can show that productive efficiency is not achieved, except in very special circumstances:

**Proposition 7** *Exactly one of the following statements is true:*

- (i) *For all cities,  $\bar{p}^l = 0$ ;*
- (ii) *The linear stationary equilibrium does not maximize  $Y$ .*

The previous proposition says that productive efficiency is reached if and only the expected return on real estate is zero in every city. In that case, insurance against the rent risk is available a cost zero (if the return is positive insurance carries a negative price). Agents base their location decisions exclusively on  $\boldsymbol{\varepsilon}$ . Expected returns on real estate are zero when: (i) The covariance matrix  $\Sigma$  is such that there is no systemic risk; (ii) The local productivity shocks are uncorrelated and the number of cities goes to infinity (there is still systemic risk coming from stocks). Outside these restrictive conditions, the distribution of  $\boldsymbol{\rho}$  matters in location choices and the equilibrium allocation does not maximize expected product.

Of course, productive inefficiency does not imply overall inefficiency. Our market equilibrium is constrained-efficient given the insurance options available in the model. Full insurance is offered only if local labor shocks – and hence local house prices – are uncorrelated with systemic risk. Outside that special case, local real estate prices carry systemic risk and location choices are affected by the desire of agents to stay away from risk that is costly to hedge.

To reinforce the point of this proposition, we fully solve an in closed-form. For ease of exposition, we let  $S = 2$ , and restrict the stock market to a single stock. We assume agents enjoy a constant insulation parameter  $\rho$  over life. Each cohort is equally divided in two agent-types: type 0 agents have no insulation ( $\rho = 0$ ), type 1 agents have full insulation,  $\rho = 1$ .<sup>22</sup> The distribution of agent-city match parameter is independent of agent type,  $\varepsilon$ , uniform over the unit interval. An agent  $(\varepsilon, \rho)$  locates in the city if and only if

$$\frac{1}{\beta^2} \sum_{s=0}^1 \beta^s (\varepsilon - \bar{r} + (1 - \beta) (1 - \beta^{3-s}) \rho \bar{p}) \geq 0.$$

The marginal city dwellers of type 0,  $\hat{\varepsilon}^0$ , and type 1,  $\hat{\varepsilon}^1$  satisfy

$$\begin{cases} \hat{\varepsilon}^0 = \bar{r} \\ \hat{\varepsilon}^1 = \bar{r} - \frac{(1-\beta)\bar{p}(1+\beta-2\beta^3)}{1+\beta}. \end{cases}$$

The market clearing condition on the spatial market is  $\frac{(1-\hat{\varepsilon}^1+1-\hat{\varepsilon}^0)}{2} = n$ , which yields a solution for the rent premium as a function of the housing price discount

$$\bar{r} = 1 - n + \frac{(1 - \beta) (1 + \beta - 2\beta^3)}{2(1 + \beta)} \bar{p}.$$

The asset market clearing conditions are

$$\begin{bmatrix} 2n \\ 2z \end{bmatrix} = \left(1 + \frac{1}{\beta}\right) \frac{(1 - \beta)^3}{2\gamma} \Sigma^{-1} \begin{bmatrix} \bar{p} \\ \bar{q} \end{bmatrix} + \begin{bmatrix} (1 - \beta^3) \left(n - \frac{1}{2} + \frac{\bar{r}}{2}\right) \\ 0 \end{bmatrix}.$$

Let  $\Sigma = \begin{bmatrix} \sigma_h^2 & \sigma_{hs} \\ \sigma_{hs} & \sigma_s^2 \end{bmatrix}$ . Replacing  $\bar{r}$  with the equation above and rearranging yields a solution for the stock price discount,  $\bar{q}$ , as a function of  $\bar{p}$ , and a solution for  $\bar{p}$ , hence a full characterization of the equilibrium

$$\begin{aligned} \bar{q} &= \frac{2\gamma}{(1 - \beta)^3 \left(1 + \frac{1}{\beta}\right)} \left( \sigma_{hs} \left( 2n - (1 - \beta^{2+1}) \left( \frac{n}{2} + \frac{(1 - \beta) (1 + \beta - 2\beta^{2+1})}{4(1 + \beta)} \bar{p} \right) \right) + 2z\sigma_s^2 \right), \\ \bar{p} &= \frac{(2n\sigma_h^2 - (1 - \beta^2) \frac{n}{2}\sigma_h^2 + 2z\sigma_{hs})}{\left(1 + \frac{1}{\beta}\right) \frac{(1-\beta)^3}{2\gamma} + (1 - \beta^{2+1}) \frac{(1-\beta)(1+\beta-2\beta^{2+1})}{4(1+\beta)} \sigma_h^2}. \end{aligned}$$

With numerical values  $\beta = n = z = -\sigma_{hs} = .5$  and  $\sigma_h = \sigma_s = \gamma = 1$ , the equilibrium solution is  $\hat{\varepsilon}^0 = \bar{r} = 0.69$ ,  $\hat{\varepsilon}^1 = 0.31$ ,  $\bar{p} = 1.12$ ,  $\bar{q} = 3.52$ . Maximizing output would have required  $\hat{\varepsilon}^0 = \hat{\varepsilon}^1 = .5$ .

---

<sup>22</sup>This example is not, strictly speaking, included in our model because it violates the assumption that the distribution of types is continuous and has full support.

#### 4.4 Housing and Stock Indices

As in CAPM one can price any portfolio with respect to the market. In this model, the relevant market is defined by the adjusted market portfolio  $M$ , discussed in Corollary 3.

In particular, one can price a housing-only index with weights  $\frac{n-R}{\mathbf{1} \cdot [n-R]}$  (we call it  $H$ ) and a stock-only index with weights  $\frac{z}{\mathbf{1} \cdot z}$  (called  $S$ ). We have:

$$\begin{aligned}\bar{p}^H &= \frac{Cov(H, M)}{Var(M)} \bar{p}^M, \\ \bar{p}^S &= \frac{Cov(S, M)}{Var(M)} \bar{p}^M.\end{aligned}$$

Note that  $H$  can be interpreted as an index tracking the market portfolio of REITs: it is the housing demand vector that is the same for all agents. It includes all houses that are not owned by local residents for hedging purposes. The following result is immediate (by putting together the two return expressions above):

**Corollary 8** *The relative returns of the housing index and the stock index are given by*

$$\bar{p}^H = \frac{Cov(H, M)}{Cov(S, M)} \bar{p}^S.$$

The corollary implies that, ceteris paribus, the difference between real estate returns and stock returns is related to home-ownership rates. The higher the fraction of residential property owned by local residents, the lower the returns on real estate.

Our model can also be used for predictions on stock returns. Often, the return of a stock is computed according to a CAPM formula that takes into account stocks only. Namely, the return of stock  $k$  is assumed to be

$$\tilde{q}^k = \frac{Cov(k, S)}{Var(S)} \bar{p}^S.$$

In our setting, this expression is of course incorrect, because it does not take into account the presence of housing. The correct expression is  $\bar{q}^k = \frac{Cov(k, M)}{Var(M)} \bar{p}^M$ . The ratio between the wrong expression and the correct one is

$$\frac{\tilde{q}^k}{\bar{q}^k} = \frac{Cov(k, S)}{Cov(k, M)} \frac{Var(S)}{Var(M)} \frac{\bar{p}^S}{\bar{p}^M}.$$

If one assumes that dividend shocks are more volatile than the whole economy which includes productivity shocks ( $Var(S) > Var(M)$ ) and stock  $k$  is more correlated with the stock index than with the whole economy ( $Cov(k, S) > Cov(k, M)$ ), then we must conclude that the ratio between the two expressions is greater than one, namely the beta's predicted by the stock-only CAPM are systematically higher than the beta's predicted by our model.

## 4.5 Economies of Agglomeration

In the core of the paper we assumed that there are no production externalities (or amenity externalities, if one embraces the amenity interpretation of our model). Our set-up can be easily extended to incorporate externalities. Most results still hold, except possibly uniqueness.

Assume that the income of an agent if he locates in  $l$  is now given by

$$y_{t,t+s}^l(\varepsilon^l, \rho^l) = y_{t-1}^l + \varepsilon^l(\mathbf{E}^l) + \sum_{m=0}^s (1 - \rho_m^l) \tau_{t+m}^l,$$

where  $\mathbf{E}^l$  is the collection of  $\varepsilon^l$  of other agents living in city  $l$ .

It is easy to see that Propositions 1 and 2 hold as stated. Proposition 4 can be re-stated as follows. For every  $(\varepsilon, \rho, \mathbf{E}^l)$ , let

$$\bar{u}^l(\varepsilon, \rho, \mathbf{E}^l) = \varepsilon^l(\mathbf{E}^l) + \frac{(1 - \beta)^2}{1 - \beta^S} \bar{p}^l \sum_{s=1}^S (1 - \beta^{S-s-1}) \rho_s^l.$$

As before, an agent locates in city  $l$  if and only if  $U^l = \max_m U^m$ .

An allocation of agents to cities is described by  $\mathbf{E} = (\mathbf{E}^1, \dots, \mathbf{E}^L)$ . Hold  $\mathbf{E}$  constant. For every  $L$ -vector  $\hat{r}$ , the aggregate demand for location  $l$  is

$$\nu^l(\hat{r}, \mathbf{E}) = \int_{(\varepsilon, \rho): \bar{u}^l(\varepsilon, \rho, \mathbf{E}^l) - \hat{r}^l = \max_m (\bar{u}^m(\varepsilon, \rho, \mathbf{E}^m) - \hat{r}^m)} \phi(\varepsilon, \rho) d(\varepsilon, \rho).$$

**Proposition 9** *An allocation  $\mathbf{E}$  is part of a linear stationary equilibrium if and only if: (i) for all  $(\varepsilon, \rho)$ , an agent with personal characteristics  $(\varepsilon, \rho)$  locates in city  $l$  if and only if*

$$\bar{u}^l(\varepsilon, \rho, \mathbf{E}^l) - \hat{r}^l = \max_m (\bar{u}^m(\varepsilon, \rho, \mathbf{E}^m) - \hat{r}^m)$$

and (ii)  $\bar{r}$  is the unique value of the vector  $\hat{r}$  such that  $\nu^l(\hat{r}, \mathbf{E}) = n^l$  in all cities.

Thus, the equilibrium characterization part of Proposition 4 is still valid. What is missing is existence and uniqueness, which will depend on the properties of the functions  $\varepsilon^l(\cdot)$ . While it would not be difficult to find conditions on  $\varepsilon^l(\cdot)$  that ensure existence, multiplicity of equilibrium is an intrinsic feature of models with economies of agglomeration. Our model does not help predict which equilibrium will arise, but it describes portfolio allocation and asset pricing in each equilibrium.

## 4.6 Ownership Only

In our frictionless model, there are no intrinsic advantages to owning or renting. Consider instead the extreme case where renting is impossible. An agent can move to city  $l$  only if

he buys one house there. In this world, all houses are owned by residents and all residents own exactly one house. Agents can still invest in stocks.

Note that the covariance matrix can be written as

$$\Sigma = \begin{bmatrix} \Sigma_{\tau\tau} & \Sigma_{\tau\nu} \\ \Sigma_{\nu\tau} & \Sigma_{\nu\nu} \end{bmatrix}.$$

We first characterize the optimal portfolio allocation:

**Proposition 10** *Given a vector of stock premia  $\bar{q}$ , the optimal portfolio allocation for an agent with parameters  $(\varepsilon, \rho)$  is*

$$\begin{bmatrix} b_{t,t+s}^1 \\ \vdots \\ b_{t,t+s}^K \end{bmatrix} = \Sigma_{\nu\nu}^{-1} \left( \frac{1}{H} \begin{bmatrix} \bar{q}^1 \\ \vdots \\ \bar{q}^K \end{bmatrix} - \begin{bmatrix} \text{cov}(\nu^1, \tau^l) \\ \vdots \\ \text{cov}(\nu^k, \tau^l) \end{bmatrix} \omega_s(\rho_{s+1}^l) \right),$$

where  $H = \frac{\beta^{s-S+2}}{(1-\beta)^3}$  and

$$\omega_s(\rho_{s+1}^l) = (1 - \rho_{s+1}^l) (1 - \beta^{S-s-1}) + \beta^{S-s-1}.$$

The expected utility of an agent with parameters  $(\varepsilon, \rho)$  if he locates in city  $l$  can be expressed as

$$U^l(\varepsilon, \rho) = \kappa_0 - \kappa_1 \bar{p}^l + \kappa_2 \varepsilon^l + \sum_{s=1}^S \xi_s \rho_s^l + \varsigma_s (\rho_s^l)^2,$$

where  $\kappa_0$ ,  $\kappa_1$ ,  $\xi_s$ , and  $\varsigma_s$  do not depend on  $(\varepsilon, \rho)$  or on  $\bar{p}^l$ .

The optimal portfolio allocation is different from the one in the frictionless case. Agents can no longer choose their real estate investment. They must buy one house in the city they live in and they cannot buy property elsewhere. They must resort to stocks – a less effective hedge than local real estate – to insure against the risk created by local productivity shocks.

The amount stock  $k$  that a certain agent demand is determined by two components:

- A classical speculative element (the same that was present in Proposition 1)
- A hedging element, which is a function of  $-\text{cov}(\nu^k, \tau^l) \omega(\rho_{s+1}^l)$ , where  $\omega_s(\rho_{s+1}^l)$  is a measure of hedging demand and  $-\text{cov}(\nu^k, \tau^l)$  determines the value of stock  $k$  as a hedge for homes in city  $l$ . If dividend shocks are positively correlated with local productivity shocks, the hedging demand is negative.

The next proposition characterizes asset pricing:

**Proposition 11** *For a given allocation of agents to cities, the excess return on stocks is given by*

$$\bar{q} = H\Sigma_{\nu\nu}z + \frac{H}{S}\Sigma_{\nu\tau}\Omega,$$

where  $\Omega = [\Omega^1 \ \dots \ \Omega^L]'$  and

$$\Omega^l = \sum_{s=0}^{S-1} \int_{\hat{i}(\varepsilon, \rho)=l} \omega_s \left( \rho_{s+1}^l \right) \phi(\varepsilon, \rho) d(\varepsilon, \rho).$$

Our asset pricing characterization now refers only to stocks: as real estate investment is fully determined by location decisions, nothing can be said about house prices until location decisions are discussed. Stock prices have two components: a classical beta-pricing element,  $H\Sigma_{\nu\nu}z$ , and an additional part that depends on their use for hedging against local productivity risk, proportional to  $\Sigma_{\nu\tau}\Omega$ .

To understand the hedging component of the stock price, note that  $\Omega$  is a vector of aggregate hedging demands, one for every city. The total hedging demand  $\Omega^l$  in city  $l$  depends on the size of the city and how low the average shock-insulation parameter is for residents of that city. The price of stock  $k$  depends on how its dividend shocks covary with productivity shocks in all cities, weighted by the total hedging demand in every city.

To discuss optimal location, let

$$\bar{u}^l(\varepsilon, \rho) = \frac{1}{\kappa_1} \left( \kappa_2 \varepsilon^l + \sum_{s=1}^S \xi_s \rho_s^l + \varsigma_s \left( \rho_s^l \right)^2 \right).$$

For every  $L$ -vector  $\hat{p}$ , we can write the aggregate demand for location  $l$  as

$$\nu^l(\hat{p}) = \int_{\bar{u}^l(\varepsilon, \rho) - \bar{p}^l = \max_{j=0, \dots, L} (\bar{u}^j(\varepsilon, \rho) - \bar{p}^j)} \phi(\varepsilon, \rho) d(\varepsilon, \rho).$$

Then, we have

**Proposition 12** *There is a unique linear stationary equilibrium. In it, an agent with personal characteristics  $(\varepsilon, \rho)$  locates in city  $l$  if and only if*

$$\bar{u}^l(\varepsilon, \rho) - \bar{p}^l = \max_{j=0, \dots, L} (\bar{u}^j(\varepsilon, \rho) - \bar{p}^j)$$

and  $\bar{p}$  is the unique value of the vector  $\hat{p}$  such that  $\nu^l(\hat{p}) = n^l$  in all cities.

The equilibrium price in city  $l$  is

$$p_t^l = \frac{1}{1 - \beta} y_t^j + \bar{p}^l.$$

As in the frictionless case, the equilibrium housing price is ultimately determined by the preferences of marginal residents. As before, the expected utility of an agent who locates in city  $l$  depends only on the value of his parameters for city  $l$  (i.e.  $\varepsilon^l$  and  $\rho_s^l$ , for all  $s$ ).<sup>23</sup> As in Proposition 4, there exists a unique price vector for which aggregate demand equals aggregate supply.

## 5 Conclusion

The main lesson of the present paper is that, in equilibrium, there exists a two-way relation between the assignment of local capital to locations and portfolio allocations and asset prices. This dependence implies that geographical differences in real estate returns can be discussed in a meaningful way only within the context of a spatial model. While this negative result makes it harder to find a “universal” real estate pricing model, it also means that spatial asset pricing can yield a wealth of testable implications involving both individual location variables and real estate prices.

Our model was just a first step towards a theory of spatial asset pricing. Its goal was to obtain a simple, tractable setup to illustrate the presence of links between location decisions and asset prices.

Future research should explore, analytically or numerically, richer models of spatial asset pricing. Clearly, it would be interesting to move beyond CARA functions. Also, in the present setting, moving costs were zero at birth and infinitely high thereafter; it would be important to study real estate prices with finite moving costs. Finally, it would be useful to allow for an elastic housing supply, perhaps even one that is determined endogenously through the political process (see Ortalo-Magné and Prat 2007 for a first step in that direction).

---

<sup>23</sup>However, now the expected utility of an agent who locates in city  $l$  takes a different form (quadratic in  $\rho_s^l$ ).

## References

- [1] Brueckner, Jan K., 1997, “Consumption and Investment Motives and the Portfolio Choices of Homeowners,” *Journal of Real Estate Finance and Economics*, 16:159–180.
- [2] Campbell, Sean D., Morris A. Davis, Joshua Gallin, and Robert F. Martin, forthcoming, “What Moves Housing Markets: A Variance Decomposition of the Rent-Price Ratio,” *Journal of Housing Economics*.
- [3] Chu, Yongqiang, 2007, “An Interntemporal Capital Asset Pricing Model with Owner-Occupied Housing,” University of Wisconsin–Madison, mimeo.
- [4] Cocco, João F., 2004, “Portfolio Choice in the Presence of Housing,” *The Review of Financial Studies*, 18:535–567.
- [5] Davidoff, Thomas, 2006, “Labor Income, Housing Prices and Homeownership,” *Journal of Urban Economics*, 59:209–235.
- [6] Davis, Morris and Jonathan Heathcote, 2005, “Housing and the Business Cycle,” *International Economic Review*, 46:751–784.
- [7] Davis, Steven J. and Paul Willen, 2000, “Using Financial Assets to Hedge Labor Income Risk: Estimating the Benefits.” Working paper, University of Chicago, March 2000.
- [8] DeMarzo, Peter M., Ron Kaniel, and Ilan Kremer, 2004, “Diversification as a Public Good: Community Effects in Portfolio Choices. *Journal of Finance*, 54: 1677–1715.
- [9] Englund, Peter, Min Hwang, and John M. Quigley, 2002, “Hedging Housing Risk,” *Journal of Real Estate Finance and Economics*, 24:163–197.
- [10] Flavin, Marjorie, and Shinobu Nakagawa, forthcoming, “A Model of Housing in the Presence of Adjustment Costs: A Structural Interpretation of Habit Persistence,” *American Economic Review*.
- [11] Flavin, Marjorie, and Takashi Yamashita, 2002, “Owner-Occupied Housing and the Composition of the Household Portfolio over the Life Cycle,” *American Economic Review*, 92:345–362.
- [12] Glaeser, Edward, and Joseph Gyourko, 2005, “Urban Decline and Durable Housing,” *Journal of Political Economy*, 113: 345–375.
- [13] Goetzmann, W. N., 1993, The Single Family Home in the Investment Portfolio, *Journal of Real Estate Finance and Economics*, 6, 201–222.

- [14] Grimaud, Andre and Jean-Jacques Laffont, 1989, “Existence of a Spatial Equilibrium,” *Journal of Urban Economics*, 25: 213–218, 1989.
- [15] Grossman, Sanford J., and Guy Laroque, 1991, “Asset Pricing and Optimal Portfolio Choice in the Presence of Illiquid Durable Consumption Goods,” *Econometrica*, 58:25–51.
- [16] Gyourko, Joseph, and Joseph Tracy, 1991, “The Structure of Local Public Finance and the Quality of Life,” *Journal of Political Economy* 99:774–806.
- [17] Henderson, J. Vernon and Yannis M. Ioannides, 1983, A Model of Housing Tenure Choice, *American Economics Review*, 73:98–111.
- [18] Hilber, Christian A.L. , 2005, “Neighborhood Externality Risk and the Homeownership Status of Properties,” *Journal of Urban Economics*, 57:213–241.
- [19] Iacoviello, Matteo, and François Ortalo-Magné, 2003, “Hedging Housing Risk in London,” *Journal of Real Estate Finance and Economics*, 27:191–209.
- [20] Kahn, Matthew E., 1995, “A Revealed Preference Approach to Ranking City Quality of Life,” *Journal of Urban Economics* 38:221–235.
- [21] Kiyotaki, Nobuhiro, Alexander Michaelides, and Kalin Nikolov, 2007, “Winners and Losers in Housing Markets,” Princeton University, mimeo.
- [22] LeBlanc, David, and Christine Lagarenne, 2004, “Owner-Occupied Housing and the Composition of the Household Portfolio: the Case of France,” *The Journal of Real Estate Finance and Economics*, 29: 259–275.
- [23] Lustig, Hanno, and Stijn Van Nieuwerburgh, 2005, “Housing Collateral, Consumption Insurance and Risk Premia: an Empirical Perspective,” *Journal of Finance*, 60:1167–1219.
- [24] Lustig, Hanno, and Stijn Van Nieuwerburgh, 2007, “Can Housing Collateral Explain Long-Run Swings in Asset Returns?,” New York University, mimeo.
- [25] Lustig, Hanno, and Stijn Van Nieuwerburgh, 2008, “How Much Does Household Collateral Constrain Regional Risk Sharing?,” New York University, mimeo.
- [26] Ortalo-Magné, François, and Andrea Prat, 2007, “The Political Economy of Housing Supply,” Discussion Paper No. TE/2007/514, The Suntory-Toyota International Centers for Economics and Related Disciplines, London School of Economics and Political Science.

- [27] Ortalo-Magné, François, and Sven Rady, 2002, “Tenure Choice and the Riskiness of Non-Housing Consumption,” *Journal of Housing Economics*, 11:266–279.
- [28] Ortalo-Magné, François, and Sven Rady, 2006, “Housing Market Dynamics: On the Contribution of Income Shocks and Credit Constraints,” *Review of Economic Studies*, 73:459–485.
- [29] Piazzesi Monika, Martin Schneider, and Selale Tuzel, 2007, “Housing, Consumption, and Asset Pricing,” *Journal of Financial Economics*, 83:531–569.
- [30] Roback, Jennifer, 1982, “Wages, Rents, and the Quality of Life,” *Journal of Political Economy*, 90:1257–1278.
- [31] Rosen, Sherwin, 1979, “Wage Based Indices of Urban Quality of Life,” in *Current Issues in Urban Economics*, edited by P. Mieszkowski and M. Straszheim. Johns Hopkins University Press.
- [32] Sinai, Todd, and Nicholas Souleles, 2005, “Owner-Occupied Housing as a Hedge Against Rent Risk,” *Quarterly Journal of Economics*, 120:763–789.
- [33] Stockman, Alan C. and Harris Dellas, 1989, “International Portfolio Diversification and Exchange Rate Variability,” *Journal of International Economics*, 26, 271-290.
- [34] Van Nieuwerburgh, Stijn and Pierre-Olivier Weill, 2006, “Why Has House Price Dispersion Gone Up?”, NBER Working Paper No. 12538, September 2006.
- [35] Yao, Rui, and Harold H. Zhang, 2005, “Optimal Consumption and Portfolio Choices with Risky Housing and Borrowing Constraints,” *The Review of Financial Studies*, 18:197–239.

## Appendix

### Proof of Proposition 1

The cash flow at period  $t + s$  for agent born at  $t$ , living in city  $l$  is

$$\begin{aligned} v_{t,t+s} &= y_{t,t+s}^l - r_{t+s}^l \\ &\quad - \sum_j \left( (p_{t+s}^j - r_{t+s}^j) a_{t,t+s}^j - p_{t+s}^j a_{t,t+s-1}^j \right) \\ &\quad - \sum_k \left( (q_{t+s}^k - d_{t+s}^k) b_{t,t+s}^k - q_{t+s}^k b_{t,t+s-1}^k \right) \end{aligned}$$

for  $s = 0, \dots, S - 1$  and

$$v_{t,t+S} = \sum_j p_{t+S}^j a_{t,t+S-1}^j + \sum_k q_{t+S}^k b_{t,t+S-1}^k.$$

The end-of-life wealth of an agent born in  $t$  (evaluated at the beginning of his life) is:

$$w_t = \frac{1}{\beta^S} \sum_{s=0}^S \beta^s v_{t,t+s}$$

Plug in the income process and the linear prices:

$$\begin{aligned} w_t &= \frac{1}{\beta^S} \sum_{s=0}^{S-1} \beta^s \left( y_{t-1}^l + \varepsilon^l + \sum_{m=0}^s (1 - \rho_m^l) \tau_{t+m}^l - y_{t-1}^l - \sum_{m=0}^s \tau_{t+m}^l - \bar{r}^l \right) \\ &\quad + \frac{1}{\beta^S} \sum_j \sum_{s=0}^{S-1} \beta^s a_{t,t+s}^j \left( \frac{\beta}{1-\beta} \tau_{t+s+1}^j + (1-\beta) \bar{p}^j \right) \\ &\quad + \frac{1}{\beta^S} \sum_k \sum_{s=0}^{S-1} \beta^s b_{t,t+s}^k \left( \frac{\beta}{1-\beta} \nu_{t+s+1}^k + (1-\beta) \bar{q}^k \right) \\ &= \frac{1}{\beta^S} \sum_{s=0}^{S-1} \beta^s (\varepsilon^l - \bar{r}^l) - \frac{1}{\beta^S} \sum_{s=0}^{S-1} \beta^s \sum_{m=0}^s \rho_m^l \tau_{t+m}^l \\ &\quad + \frac{1}{\beta^S} \sum_j \sum_{s=0}^{S-1} \beta^s a_{t,t+s}^j \left( \frac{\beta}{1-\beta} \tau_{t+s+1}^j + (1-\beta) \bar{p}^j \right) \\ &\quad + \frac{1}{\beta^S} \sum_k \sum_{s=0}^{S-1} \beta^s b_{t,t+s}^k \left( \frac{\beta}{1-\beta} \nu_{t+s+1}^k + (1-\beta) \bar{q}^k \right) \end{aligned}$$

because  $\rho_0^l = 0$ . Note that

$$\begin{aligned}
\sum_{s=0}^{S-1} \beta^s \sum_{m=0}^s \rho_m^l \tau_{t+m}^l &= \sum_{s=0}^{S-1} \rho_s^l \tau_{t+s}^l \sum_{m=s}^{S-1} \beta^m = \sum_{s=0}^{S-1} \rho_s^l \tau_{t+s}^l \beta^s \sum_{m=0}^{S-1-s} \beta^m \\
&= \sum_{s=0}^{S-1} \rho_s^l \tau_{t+s}^l \frac{\beta^s (1 - \beta^{S-s})}{1 - \beta} \\
&= \sum_{s=1}^{S-1} \rho_s^l \tau_{t+s}^l \frac{\beta^s (1 - \beta^{S-s})}{1 - \beta} \text{ because } \rho_0 = 0 \\
&= \sum_{s=0}^{S-2} \beta^s (1 - \beta^{S-s-1}) \rho_{s+1}^l \frac{\beta}{1 - \beta} \tau_{t+s+1}^l \\
&= \sum_{s=0}^{S-1} \beta^s (1 - \beta^{S-s-1}) \rho_{s+1}^l \frac{\beta}{1 - \beta} \tau_{t+s+1}^l \text{ because } \rho_S \equiv 0
\end{aligned}$$

Then,

$$\begin{aligned}
w_t &= \sum_{s=0}^{S-1} \beta^{s-S} \left( (\varepsilon^l - \bar{r}^l) - (1 - \beta^{S-s-1}) \rho_{s+1}^l \frac{\beta}{1 - \beta} \tau_{t+s+1}^l \right) \\
&\quad + \sum_{s=0}^{S-1} \beta^{s-S} \sum_j a_{t,t+s}^j \left( \frac{\beta}{1 - \beta} \tau_{t+s+1}^j + (1 - \beta) \bar{p}^j \right) + \sum_{s=0}^{S-1} \beta^{s-S} \sum_k b_{t,t+s}^k \left( \frac{\beta}{1 - \beta} \nu_{t+s+1}^k + (1 - \beta) \bar{q}^k \right)
\end{aligned}$$

Hence,

$$\begin{aligned}
E[w_t] &= \sum_{s=0}^{S-1} \beta^{s-S} \left( \varepsilon^l - \bar{r}^l + (1 - \beta) \left( (1 - \beta^{S-s-1}) \rho_{s+1}^l \bar{p}^l + \sum_{j=1}^L \tilde{a}_{t,t+s}^j \bar{p}^j + \sum_{k=1}^K b_{t,t+s}^k \bar{q}^k \right) \right) \\
Var[w_t] &= \frac{\beta^2}{(1 - \beta)^2} \sum_{s=0}^{S-1} \beta^{2(s-S)} Var \left[ \sum_{j=1}^L \tilde{a}_{t,t+s}^j \tau_{t+s+1}^j + \sum_{k=1}^K b_{t,t+s}^k \nu_{t+s+1}^k \right]
\end{aligned}$$

where  $\tilde{a}_{t,t+s}^l = a_{t,t+s}^l - (1 - \beta^{S-s-1}) \rho_{s+1}^l$  and  $\tilde{a}_{t,t+s}^j = a_{t,t+s}^j$  for all  $j \neq l$ . In a matrix form, this is re-written as

$$\begin{aligned}
E[w_t] &= \sum_{s=0}^{S-1} \beta^{s-S} \left( \varepsilon^l - \bar{r}^l + (1 - \beta) \left( (1 - \beta^{S-s-1}) \rho_{s+1}^l \bar{p}^l + \begin{bmatrix} \tilde{\mathbf{a}}_{t,t+s} \\ \mathbf{b}_{t,t+s} \end{bmatrix}' \begin{bmatrix} \bar{\mathbf{p}} \\ \bar{\mathbf{q}} \end{bmatrix} \right) \right) \\
Var[w_t] &= \frac{\beta^2}{(1 - \beta)^2} \sum_{s=0}^{S-1} \beta^{2(s-S)} \begin{bmatrix} \tilde{\mathbf{a}}_{t,t+s} \\ \mathbf{b}_{t,t+s} \end{bmatrix}' \Sigma \begin{bmatrix} \tilde{\mathbf{a}}_{t,t+s} \\ \mathbf{b}_{t,t+s} \end{bmatrix}
\end{aligned}$$

The first-order conditions yield

$$\begin{bmatrix} \tilde{\mathbf{a}}_{t,t+s} \\ \mathbf{b}_{t,t+s} \end{bmatrix} = \frac{(1 - \beta)^3}{2\gamma\beta^{s+2}} \beta^S \Sigma^{-1} \begin{bmatrix} \bar{\mathbf{p}} \\ \bar{\mathbf{q}} \end{bmatrix},$$

Plug back into the utility function:

$$\begin{aligned}
U &= \frac{1}{\beta^S} \sum_{s=0}^{S-1} \beta^s (\varepsilon^l - \bar{r}^l) + \frac{1}{\beta^S} \sum_{s=0}^{S-1} \beta^s (1 - \beta^{S-s-1}) \rho_{s+1}^l (1 - \beta) \bar{p}^l \\
&\quad + \frac{1}{\beta^S} \sum_{s=0}^{S-1} \beta^s (1 - \beta) \left( \frac{(1 - \beta)^3}{2\gamma\beta^{s+2}} \beta^S \left[ \begin{array}{c} \bar{p} \\ \bar{q} \end{array} \right]' \Sigma^{-1} \left[ \begin{array}{c} \bar{p} \\ \bar{q} \end{array} \right] \right) \\
&\quad - \gamma \frac{1}{\beta^{2S}} \frac{\beta^2}{(1 - \beta)^2} \sum_{s=0}^{S-1} \beta^{2s} \frac{(1 - \beta)^3}{2\gamma\beta^{s+2}} \frac{(1 - \beta)^3}{2\gamma\beta^{s+2}} \beta^{2S} \left[ \begin{array}{c} \bar{p} \\ \bar{q} \end{array} \right]' \Sigma^{-1} \Sigma \Sigma^{-1} \left[ \begin{array}{c} \bar{p} \\ \bar{q} \end{array} \right] \\
&= \frac{1}{\beta^S} \sum_{s=0}^{S-1} \beta^s (\varepsilon^l - \bar{r}^l + (1 - \beta) (1 - \beta^{S-s-1}) \rho_{s+1}^l \bar{p}^l) + S \frac{(1 - \beta)^4}{4\gamma\beta^2} \left[ \begin{array}{c} \bar{p} \\ \bar{q} \end{array} \right]' \Sigma^{-1} \left[ \begin{array}{c} \bar{p} \\ \bar{q} \end{array} \right]
\end{aligned}$$

■

## Proof of Proposition 2

The demands for assets excluding the hedging motive can be written as

$$\left[ \begin{array}{c} \tilde{\mathbf{a}}_{t-s,t} \\ \mathbf{b}_{t-s,t} \end{array} \right] = \frac{(1 - \beta)^3}{2\gamma\beta^{s+2}} \beta^S \Sigma^{-1} \left[ \begin{array}{c} \bar{p} \\ \bar{q} \end{array} \right]$$

for  $s = 0, \dots, S - 1$ . Since all agents have the same portfolio and there is a measure one of agents in each cohort, the aggregate portfolio demand for assets (excluding the hedging motive), is

$$\sum_{s=0}^{S-1} \left[ \begin{array}{c} \tilde{\mathbf{a}}_{t-s,t} \\ \mathbf{b}_{t-s,t} \end{array} \right] = \left( 1 + \frac{1}{\beta} + \frac{1}{\beta^2} + \dots + \frac{1}{\beta^{S-1}} \right) \left[ \begin{array}{c} \tilde{\mathbf{a}}_{t,t} \\ \mathbf{b}_{t,t} \end{array} \right] = \frac{1 - \beta^S}{(1 - \beta) \beta^{S-1}} \left[ \begin{array}{c} \tilde{\mathbf{a}}_{t,t} \\ \mathbf{b}_{t,t} \end{array} \right].$$

The housing demand in city  $l$  by people with age  $s$  due to the hedging motive is

$$(1 - \beta^{S-s-1}) \int_{\varepsilon} \int_{\rho} I_{\varepsilon, \rho}^l \rho_{s+1}^l \phi(\varepsilon, \rho) d\varepsilon d\rho.$$

It is then easy to see that the total housing demand in city  $l$  due to the hedging motive is  $SR^l$ , where  $R^l$  is defined as in the statement of the proposition.

The supply of houses minus the hedging demand in every city is  $S(\mathbf{n} - \mathbf{R})$ . The housing market clearing condition is therefore

$$\frac{1 - \beta^S}{(1 - \beta) \beta^{S-1}} \tilde{\mathbf{a}}_{t,t} = S(\mathbf{n} - \mathbf{R}).$$

Hence

$$\tilde{\mathbf{a}}_{t,t} = S \frac{(1 - \beta) \beta^{S-1}}{(1 - \beta^S)} (\mathbf{n} - \mathbf{R})$$

and by analogy

$$\mathbf{b}_{t,t} = S \frac{(1 - \beta) \beta^{S-1}}{(1 - \beta^S)} \mathbf{z}.$$

Plugging in the demand function yields a solution to the housing and stock risk premia yields

$$\begin{aligned}
S \frac{(1 - \beta) \beta^{S-1}}{(1 - \beta^S)} \left[ \begin{array}{c} (\mathbf{n} - \mathbf{R}) \\ \mathbf{z} \end{array} \right] &= \frac{(1 - \beta)^3}{2\gamma\beta^2} \beta^S \Sigma^{-1} \left[ \begin{array}{c} \bar{p} \\ \bar{q} \end{array} \right] \\
2\gamma S \frac{\beta}{(1 - \beta)^2 (1 - \beta^S)} \Sigma \left[ \begin{array}{c} \mathbf{n} - \mathbf{R} \\ \mathbf{z} \end{array} \right] &= \left[ \begin{array}{c} \bar{p} \\ \bar{q} \end{array} \right].
\end{aligned}$$

■

### Proof of Corollary 3

Note that

$$\begin{aligned} \text{Cov}(l, M) &= \frac{1}{Q} \left( \sum_{m=1}^L (n^m - R^m) \text{Cov}(\tau^l, \tau^m) + \sum_{k=1}^K z^k \text{Cov}(\tau^l, \nu^k) \right) \\ \text{Var}(M) &= \frac{1}{Q^2} \begin{bmatrix} \mathbf{n} - \mathbf{R} \\ \mathbf{z} \end{bmatrix}' \boldsymbol{\Sigma} \begin{bmatrix} \mathbf{n} - \mathbf{R} \\ \mathbf{z} \end{bmatrix} \end{aligned}$$

The expected return of a zero-cost market portfolio containing one unit of  $M$  is given by

$$\begin{aligned} \bar{p}^M &= \frac{\sum_{l=1}^L (n^l - R^l) \bar{p}^l + \sum_{k=1}^K z^k \bar{q}^k}{\sum_{l=1}^L (n^l - R^l) + \sum_{k=1}^K z^k} = \frac{1}{Q} \begin{bmatrix} \mathbf{n} - \mathbf{R} \\ \mathbf{z} \end{bmatrix}' \begin{bmatrix} \bar{\mathbf{p}} \\ \bar{\mathbf{q}} \end{bmatrix} \\ &= 2\gamma \frac{\beta}{(1-\beta)^2 (1-\beta^S)} S \frac{1}{Q} \begin{bmatrix} \mathbf{n} - \mathbf{R} \\ \mathbf{z} \end{bmatrix}' \boldsymbol{\Sigma} \begin{bmatrix} \mathbf{n} - \mathbf{R} \\ \mathbf{z} \end{bmatrix} = 2\gamma \frac{\beta}{(1-\beta)^2 (1-\beta^S)} SQ \text{Var}(M). \end{aligned}$$

Similarly

$$\begin{aligned} \bar{p}^l &= 2\gamma \frac{\beta}{(1-\beta)^2 (1-\beta^S)} S \left( \sum_{m=1}^L (n^m - R^m) \text{Cov}(\tau^l, \tau^m) + \sum_{k=1}^K z^k \text{Cov}(\tau^l, \nu^k) \right) \\ &= 2\gamma \frac{\beta}{(1-\beta)^2 (1-\beta^S)} SQ \text{Cov}(l, M) \end{aligned}$$

Hence, we can write

$$\frac{\bar{p}^l}{\bar{p}^M} = \frac{\text{Cov}(l, M)}{\text{Var}(M)}.$$

The proof for  $k$  follows similar lines and is omitted. ■

### Proof of Proposition 4

It is immediate to see that a solution to  $\boldsymbol{\nu}(\hat{\mathbf{r}}) = \mathbf{n}$  constitutes a linear stationary equilibrium: no agent wants to change location, by definition  $r_t^l = y_t^j + \bar{r}^l$ , and the conditions for Propositions 1 and 2 are satisfied.

To prove existence, note that  $\nu^l(\hat{\mathbf{r}})$  is continuous in  $\hat{\mathbf{r}}$  and that  $\lim_{\hat{r}^l \rightarrow -\infty} \nu^l(\hat{\mathbf{r}}) = 1$  and  $\lim_{\hat{r}^l \rightarrow \infty} \nu^l(\hat{\mathbf{r}}) = 0$ .

To prove uniqueness, suppose that the system  $\boldsymbol{\nu}(\hat{\mathbf{r}}) = \mathbf{n}$  has two distinct solutions  $\bar{\mathbf{r}}$  and  $\tilde{\mathbf{r}}$ . Assume without loss of generality that there exists a non-empty set of cities  $\tilde{L}$  for which  $(\tilde{r}^l)^l < \bar{r}^l$ . The set of agents who locate in a city in  $\tilde{L}$  is given by

$$\left\{ (\boldsymbol{\varepsilon}, \boldsymbol{\rho}) : \max_{l \in \tilde{L}} (\bar{u}^l(\boldsymbol{\varepsilon}, \boldsymbol{\rho}) - \bar{r}^l) \geq \max_{j \notin \tilde{L}} (\bar{u}^j(\boldsymbol{\varepsilon}, \boldsymbol{\rho}) - \tilde{r}^j) \right\}$$

Note however, that this set must become strictly larger when  $\bar{\mathbf{r}}$  is replaced by  $\tilde{\mathbf{r}}$ , because all elements  $\bar{u}^l(\boldsymbol{\varepsilon}, \boldsymbol{\rho}) - \bar{r}^l$  on one side become strictly larger and all elements  $\bar{u}^j(\boldsymbol{\varepsilon}, \boldsymbol{\rho}) - \tilde{r}^j$  on the other side do not become larger. Hence, more agents will want to locate in cities in  $\tilde{L}$ , but this is impossible as the mass of agents who locate in  $\tilde{L}$  must sum up to  $\sum_{l \in \tilde{L}} n^l$  in both solutions. ■

### Proof of Proposition 5

In the limit,

$$\bar{u}^l = \varepsilon^l + \frac{1-\beta}{1-\beta^S} \left(1 - (S+1)\beta^S + S\beta^{S+1}\right) \bar{p}^l \tilde{\rho}_{s+1}^l.$$

As  $\tilde{\rho}_{s+1}^l$  are the same for all agents and the  $\tilde{\varepsilon}$ 's are uniformly distributed, we write

$$\nu^l(\hat{r}) = \int_{\tilde{\varepsilon}: \tilde{\varepsilon}^l - \hat{r}^l = \max_m(\tilde{\varepsilon}^m - \hat{r}^m)} d\tilde{\varepsilon}$$

This problem is symmetric in  $l$ . Hence, the unique solution to  $\nu^l(\hat{r}) = \frac{1}{L}N$  for  $l = 1, \dots, L$  must be symmetric in  $l$ , namely  $\bar{r}^l = \bar{r}$ . This means that the mass of agents who locates in the city is  $\nu^0(\hat{r}) = \bar{r}^L$ . This implies  $\bar{r} = (1-N)^{\frac{1}{L}}$ . The equilibrium rent is given by

$$r^l = \bar{r} + \frac{(1-\beta)^2}{1-\beta^S} \bar{p}^l \sum_{s=1}^S \left(1 - \beta^{S-s-1}\right) \tilde{\rho}_s^l.$$

■

### Proof of Proposition 6

Consider any allocation of agents to cities. Suppose an agent with  $(\varepsilon^l, \varepsilon^m)$  is allocated to city  $l$  and another agent with  $((\varepsilon^l)', (\varepsilon^m)')$  is allocated to  $m$ . Swapping agents does not increase total expected production if and only if

$$\varepsilon^l - (\varepsilon^l)' \geq \varepsilon^m - (\varepsilon^m)'$$

If this holds true for every agent, one can find a unique vector  $\bar{\varepsilon}$  such that the condition in the statement is satisfied. ■

### Proof of Proposition 7

According to proposition 4, in a linear stationary equilibrium agents are assigned to cities according to

$$\bar{u}^l(\varepsilon, \rho) = \varepsilon^l + \frac{(1-\beta)^2}{1-\beta^S} \bar{p}^l \sum_{s=1}^S \left(1 - \beta^{S-s-1}\right) \rho_s^l$$

suppose that an agent with a certain  $(\varepsilon, \rho)$  locates in city  $l$ . His next preferred city is  $m$ , and the utility difference between the two cities is given by

$$D = \bar{u}^l(\varepsilon, \rho) - \bar{u}^m(\varepsilon, \rho),$$

where  $D$  is sufficiently low. Consider another agent with  $(\varepsilon', \rho')$  which is identical to  $(\varepsilon, \rho)$  except that  $(\varepsilon')^l = \varepsilon^l + \delta$  and  $\sum_{s=1}^S \left(1 - \beta^{S-s-1}\right) (\rho')_s^l = \sum_{s=1}^S \left(1 - \beta^{S-s-1}\right) \rho_s^l - \alpha$ . Given a positive  $\bar{p}^l$ , it is always possible to find  $\alpha$  and  $\delta$  such that  $\bar{u}^l(\varepsilon', \rho') < \bar{u}^m(\varepsilon', \rho')$ . By the assumption that  $\phi$  has full support, agents with  $(\varepsilon, \rho)$  and  $(\varepsilon', \rho')$  exist. The sum of expected outputs of the two agents would be higher if the agents switched cities. ■

### Proof of Proposition 9

The first part is immediate. If  $\mathbf{E}$  is an allocation and prices are linear, then every agent is using  $\bar{u}^l(\varepsilon, \rho, \mathbf{E}^l) - \bar{r}^l$  as a criterion to locate and rents must equate demand and supply. The argument for the uniqueness of  $\bar{r}^l$  (given  $\mathbf{E}$ ) is unchanged from the proof of Proposition 4.  $\blacksquare$

### Proof of Proposition 10

Consider an agent born in period  $t$  with parameters  $(\varepsilon, \rho)$  who locates in city  $l$ . His wealth at the end of his life is

$$w_t = \sum_{s=0}^{S-1} \beta^{s-S} \left( y_{t-1}^l + \varepsilon^l + \sum_{m=0}^s (1 - \rho_m^l) \tau_{t+m}^l + \sum_k b_{t,t+s}^k \left( \frac{\beta}{1-\beta} \nu_{t+s+1}^j + (1-\beta) \bar{q}^k \right) \right) - \frac{1}{\beta^S} p_t^l + p_{t+S}^l.$$

Conjecture  $p_t^l = \frac{1}{1-\beta} y_t^l - \bar{p}^l$ . This implies  $p_{t+S}^l = \frac{1}{1-\beta} y_{t+S}^l - \bar{p}^l = \frac{1}{1-\beta} (y_t^l + \tau_{t+1} + \dots + \tau_{t+S-1} + \tau_{t+S}) - \bar{p}^l = p_t^l + \frac{1}{1-\beta} \left( \sum_{s=0}^{S-1} \tau_{t+s+1} \right)$ . Replacing in the above equation yields

$$\begin{aligned} w_t &= \sum_{s=0}^{S-1} \beta^{s-S} \left( y_{t-1}^l + \varepsilon^l + \sum_{m=0}^s (1 - \rho_m^l) \tau_{t+m}^l + \sum_k b_{t,t+s}^k \left( \frac{\beta}{1-\beta} \nu_{t+s+1}^j + (1-\beta) \bar{q}^k \right) \right) \\ &\quad + \left( 1 - \frac{1}{\beta^S} \right) p_t^l + \sum_{s=1}^S \frac{1}{1-\beta} \tau_{t+s}^l \\ w_t &= \sum_{s=0}^{S-1} \beta^{s-S} \left( y_{t-1}^l + \varepsilon^l + \sum_k b_{t,t+s}^k \left( \frac{\beta}{1-\beta} \nu_{t+s+1}^j + (1-\beta) \bar{q}^k \right) \right) + \sum_{s=0}^{S-1} \beta^{s-S} \sum_{m=0}^s (1 - \rho_m^l) \tau_{t+m}^l \\ &\quad + \left( 1 - \frac{1}{\beta^S} \right) p_t^l + \sum_{s=0}^{S-1} \frac{1}{1-\beta} \tau_{t+s+1}^l. \end{aligned}$$

Note

$$\begin{aligned}
\sum_{s=0}^{S-1} \beta^{s-S} \sum_{m=0}^s (1 - \rho_m^l) \tau_{t+m}^l &= \frac{1}{\beta^S} \sum_{s=0}^{S-1} (1 - \rho_s^l) \tau_{t+s}^l \sum_{m=s}^{S-1} \beta^m \\
&= \frac{1}{\beta^S} \sum_{s=0}^{S-1} (1 - \rho_s^l) \tau_{t+s}^l \beta^s \frac{1 - \beta^{S-s}}{1 - \beta} \\
&= \sum_{s=0}^{S-1} (1 - \rho_s^l) \frac{\beta^{s-S} - 1}{1 - \beta} \tau_{t+s}^l \\
&= \sum_{s=1}^S (1 - \rho_s^l) \frac{\beta^{s-S} - 1}{1 - \beta} \tau_{t+s}^l + (1 - \rho_0^l) \frac{\beta^{0-S} - 1}{1 - \beta} \tau_t^l \\
&\quad - (1 - \rho_S^l) \frac{\beta^{S-S} - 1}{1 - \beta} \tau_{t+S}^l \\
&= \sum_{s=0}^{S-1} (1 - \rho_{s+1}^l) \frac{\beta^{s-S+1} - 1}{1 - \beta} \tau_{t+s+1}^l + (1 - \rho_0^l) \frac{\beta^{-S} - 1}{1 - \beta} \tau_t^l \\
&\quad - (1 - \rho_S^l) \frac{\beta^{S-S} - 1}{1 - \beta} \tau_{t+S}^l \\
&= \sum_{s=0}^{S-1} \beta^{s-S} \frac{\beta}{1 - \beta} (1 - \beta^{S-s-1}) (1 - \rho_{s+1}^l) \tau_{t+s+1}^l + \frac{\beta^{-S} - 1}{1 - \beta} \tau_t^l.
\end{aligned}$$

We have therefore

$$\begin{aligned}
w_t &= \sum_{s=0}^{S-1} \beta^{s-S} \left( y_{t-1}^l + \varepsilon^l + \sum_k b_{t,t+s}^k \left( \frac{\beta}{1 - \beta} \nu_{t+s+1}^j + (1 - \beta) \bar{q}^k \right) \right) \\
&\quad + \sum_{s=0}^{S-1} \beta^{s-S} \frac{\beta}{1 - \beta} (1 - \beta^{S-s-1}) (1 - \rho_{s+1}^l) \tau_{t+s+1}^l \\
&\quad + \frac{\beta^{-S} - 1}{1 - \beta} \tau_t^l + \left( 1 - \frac{1}{\beta^S} \right) p_t^l + \sum_{s=0}^{S-1} \frac{1}{1 - \beta} \tau_{t+s+1}^l \\
w_t &= \sum_{s=0}^{S-1} \beta^{s-S} \left( y_{t-1}^l + \varepsilon^l + \sum_k b_{t,t+s}^k \left( \frac{\beta}{1 - \beta} \nu_{t+s+1}^j + (1 - \beta) \bar{q}^k \right) \right) \\
&\quad + \sum_{s=0}^{S-1} \beta^{s-S} \left( \frac{\beta}{1 - \beta} (1 - \beta^{S-s-1}) (1 - \rho_{s+1}^l) + \frac{\beta}{1 - \beta} \beta^{S-s-1} \right) \tau_{t+s+1}^l \\
&\quad + \frac{\beta^{-S} - 1}{1 - \beta} \tau_t^l + \left( 1 - \frac{1}{\beta^S} \right) p_t^l \\
w_t &= \sum_{s=0}^{S-1} \beta^{s-S} \left( y_{t-1}^l + \varepsilon^l + \left( (1 - \rho_{s+1}^l) (1 - \beta^{S-s-1}) + \beta^{S-s-1} \right) \frac{\beta}{1 - \beta} \tau_{t+s+1}^l \right) \\
&\quad + \sum_k b_{t,t+s}^k \left( \frac{\beta}{1 - \beta} \nu_{t+s+1}^j + (1 - \beta) \bar{q}^k \right) \\
&\quad + \frac{\beta^{-S} - 1}{1 - \beta} \tau_t^l + \left( 1 - \frac{1}{\beta^S} \right) p_t^l.
\end{aligned}$$

Note  $\frac{\beta^{-s}-1}{1-\beta}\tau_t^l + \left(1 - \frac{1}{\beta^s}\right)p_t^l = \frac{1}{\beta^s}\frac{1-\beta^s}{1-\beta}\tau_t^l - \frac{1}{\beta^s}\frac{1-\beta^s}{1-\beta}(1-\beta)p_t^l = \sum_{s=0}^{S-1}\beta^{s-S}(\tau_t^l - (1-\beta)p_t^l)$ . Using  $p_t^l = \frac{1}{1-\beta}(y_{t-1} + \tau_t) - \bar{p}^l$  this yields

$$\begin{aligned} \frac{\beta^{-S}-1}{1-\beta}\tau_t^l + \left(1 - \frac{1}{\beta^S}\right)p_t^l &= \sum_{s=0}^{S-1}\beta^{s-S}(\tau_t^l - (1-\beta)p_t^l) \\ &= \sum_{s=0}^{S-1}\beta^{s-S}\left(\tau_t^l - (1-\beta)\left(\frac{1}{1-\beta}(y_{t-1} + \tau_t) - \bar{p}^l\right)\right) \\ &= \sum_{s=0}^{S-1}\beta^{s-S}(-y_{t-1} + (1-\beta)\bar{p}^l). \end{aligned}$$

So we now have

$$\begin{aligned} w_t &= \sum_{s=0}^{S-1}\beta^{s-S}\left(y_{t-1}^l + \varepsilon^l - y_{t-1} + (1-\beta)\bar{p}^l + \left((1-\rho_{s+1}^l)(1-\beta^{S-s-1}) + \beta^{S-s-1}\right)\frac{\beta}{1-\beta}\tau_{t+s+1}^l\right. \\ &\quad \left. + \sum_k b_{t,t+s}^k\left(\frac{\beta}{1-\beta}\nu_{t+s+1}^j + (1-\beta)\bar{q}^k\right)\right) \\ w_t &= \sum_{s=0}^{S-1}\beta^{s-S}\left(\varepsilon^l + (1-\beta)\bar{p}^l + \left((1-\rho_{s+1}^l)(1-\beta^{S-s-1}) + \beta^{S-s-1}\right)\frac{\beta}{1-\beta}\tau_{t+s+1}^l\right. \\ &\quad \left. + \sum_k b_{t,t+s}^k\left(\frac{\beta}{1-\beta}\nu_{t+s+1}^j + (1-\beta)\bar{q}^k\right)\right). \end{aligned}$$

Then

$$\begin{aligned} E[w_t] &= \sum_{s=0}^{S-1}\beta^{s-S}\left(\varepsilon^l + (1-\beta)\begin{bmatrix} 0 \\ \vdots \\ 1 \\ \vdots \\ 0 \\ b_{t,t+s}^1 \\ \vdots \\ b_{t,t+s}^K \end{bmatrix}' \begin{bmatrix} \bar{p}^1 \\ \vdots \\ \bar{p}^l \\ \vdots \\ \bar{p}^L \\ \bar{q}^1 \\ \vdots \\ \bar{q}^K \end{bmatrix}\right), \\ \text{Var}[w_t] &= \frac{\beta^2}{(1-\beta)^2}\sum_{s=0}^{S-1}\beta^{2(s-S)}\begin{bmatrix} 0 \\ \vdots \\ \omega_s(\rho_{s+1}^l) \\ \vdots \\ 0 \\ b_{t,t+s}^1 \\ \vdots \\ b_{t,t+s}^K \end{bmatrix}' \mathbf{\Sigma} \begin{bmatrix} 0 \\ \vdots \\ \omega_s(\rho_{s+1}^l) \\ \vdots \\ 0 \\ b_{t,t+s}^1 \\ \vdots \\ b_{t,t+s}^K \end{bmatrix}, \end{aligned}$$

where

$$\omega_s(\rho_{s+1}^l) = (1-\rho_{s+1}^l)(1-\beta^{S-s-1}) + \beta^{S-s-1}.$$

The first-order condition for the optimal stock investment is

$$\begin{bmatrix} \bar{q}^1 \\ \vdots \\ \bar{q}^K \end{bmatrix} = H \begin{bmatrix} \Sigma_{\nu\tau} & \Sigma_{\nu\nu} \end{bmatrix} \begin{bmatrix} 0 \\ \vdots \\ \omega_s (\rho_{s+1}^l) \\ \vdots \\ 0 \\ b_{t,t+s}^1 \\ \vdots \\ b_{t,t+s}^K \end{bmatrix} = H \begin{bmatrix} \text{cov}(\nu^1, \tau^l) \\ \vdots \\ \text{cov}(\nu^k, \tau^l) \end{bmatrix} \omega_s (\rho_{s+1}^l) + H \Sigma_{\nu\nu} \begin{bmatrix} b_{t,t+s}^1 \\ \vdots \\ b_{t,t+s}^K \end{bmatrix},$$

where

$$H = \frac{\beta^{s-S+2}}{(1-\beta)^3}.$$

The vector of individual demands for stocks is

$$\begin{bmatrix} b_{t,t+s}^1 \\ \vdots \\ b_{t,t+s}^K \end{bmatrix} = \frac{\Sigma_{\nu\nu}^{-1}}{H} \begin{bmatrix} \bar{q}^1 \\ \vdots \\ \bar{q}^K \end{bmatrix} - \Sigma_{\nu\nu}^{-1} \begin{bmatrix} \text{cov}(\nu^1, \tau^l) \\ \vdots \\ \text{cov}(\nu^k, \tau^l) \end{bmatrix} \omega_s (\rho_{s+1}^l).$$

Let

$$\mathbf{h}^l = \begin{bmatrix} \text{cov}(\nu^1, \tau^l) \\ \vdots \\ \text{cov}(\nu^k, \tau^l) \end{bmatrix}.$$

The expectation and the variance of final wealth are given respectively by

$$\begin{aligned} E[w_t] &= \sum_{s=0}^{S-1} \beta^{s-S} (\varepsilon^l + (1-\beta) (\bar{p}^l + \mathbf{b}' \bar{\mathbf{q}})) \\ &= \sum_{s=0}^{S-1} \beta^{s-S} \left( \varepsilon^l + (1-\beta) \left( \bar{p}^l + \left( \frac{\Sigma_{\nu\nu}^{-1}}{H} \bar{\mathbf{q}} - \Sigma_{\nu\nu}^{-1} \begin{bmatrix} \text{cov}(\nu^1, \tau^l) \\ \vdots \\ \text{cov}(\nu^k, \tau^l) \end{bmatrix} \omega_s \right)' \bar{\mathbf{q}} \right) \right) \\ &= \sum_{s=0}^{S-1} \beta^{s-S} \left( \varepsilon^l + (1-\beta) \left( \bar{p}^l + \bar{\mathbf{q}}' \frac{\Sigma_{\nu\nu}^{-1}}{H} \bar{\mathbf{q}} - \bar{\mathbf{q}}' \Sigma_{\nu\nu}^{-1} \mathbf{h}^l \omega_s \right) \right), \end{aligned}$$

and

$$\begin{aligned} \text{Var}[w_t] &= \frac{\beta^2}{(1-\beta)^2} \sum_{s=0}^{S-1} \beta^{2(s-S)} \left( \text{Var}(\tau^l) \omega_s^2 + \mathbf{b}' \begin{bmatrix} \text{cov}(\nu^1, \tau^l) \\ \vdots \\ \text{cov}(\nu^k, \tau^l) \end{bmatrix} \omega_s + \mathbf{b}' \Sigma_{\nu\nu} \mathbf{b} \right) \\ &= \frac{\beta^2}{(1-\beta)^2} \sum_{s=0}^{S-1} \beta^{2(s-S)} \left( \text{Var}(\tau^l) \omega_s^2 + \left( \frac{\Sigma_{\nu\nu}^{-1}}{H} \bar{\mathbf{q}} - \Sigma_{\nu\nu}^{-1} \mathbf{h}^l \omega_s \right)' \mathbf{h}^l \omega_s \right. \\ &\quad \left. + \left( \frac{\Sigma_{\nu\nu}^{-1}}{H} \bar{\mathbf{q}} - \Sigma_{\nu\nu}^{-1} \mathbf{h}^l \omega_s \right)' \Sigma_{\nu\nu} \left( \frac{\Sigma_{\nu\nu}^{-1}}{H} \bar{\mathbf{q}} - \Sigma_{\nu\nu}^{-1} \mathbf{h}^l \omega_s \right) \right) \\ &= \frac{\beta^2}{(1-\beta)^2} \sum_{s=0}^{S-1} \beta^{2(s-S)} \left( \text{Var}(\tau^l) \omega_s^2 + \frac{1}{H} (\mathbf{h}^l)' \Sigma_{\nu\nu}^{-1} \bar{\mathbf{q}} \omega_s - (\mathbf{h}^l)' \Sigma_{\nu\nu}^{-1} \mathbf{h}^l \omega_s^2 \right. \\ &\quad \left. + \frac{1}{H^2} \bar{\mathbf{q}}' \Sigma_{\nu\nu}^{-1} \bar{\mathbf{q}} - 2 \bar{\mathbf{q}}' \Sigma_{\nu\nu}^{-1} \mathbf{h}^l \omega_s + (\mathbf{h}^l)' \Sigma_{\nu\nu}^{-1} \mathbf{h}^l \omega_s^2 \right). \end{aligned}$$

■

### Proof of Proposition 11

The market clearing condition is

$$\begin{aligned}
S \begin{bmatrix} z^1 \\ \vdots \\ z^K \end{bmatrix} &= \sum_{s=0}^{S-1} \sum_{l=0}^L \int_{\hat{l}(\boldsymbol{\varepsilon}, \boldsymbol{\rho})=l} \begin{bmatrix} b_{t,t+s}^1 \\ \vdots \\ b_{t,t+s}^K \end{bmatrix} \phi(\boldsymbol{\varepsilon}, \boldsymbol{\rho}) d(\boldsymbol{\varepsilon}, \boldsymbol{\rho}) \\
&= \sum_{s=0}^{S-1} \sum_{l=0}^L \int_{\hat{l}(\boldsymbol{\varepsilon}, \boldsymbol{\rho})=l} \left( \frac{\Sigma_{\nu\nu}^{-1}}{H} \begin{bmatrix} \bar{q}^1 \\ \vdots \\ \bar{q}^K \end{bmatrix} - \Sigma_{\nu\nu}^{-1} \begin{bmatrix} \text{cov}(\nu^1, \tau^l) \\ \vdots \\ \text{cov}(\nu^K, \tau^l) \end{bmatrix} \omega(\rho_{s+1}^l) \right) \phi(\boldsymbol{\varepsilon}, \boldsymbol{\rho}) d(\boldsymbol{\varepsilon}, \boldsymbol{\rho}) \\
&= S \frac{\Sigma_{\nu\nu}^{-1}}{H} \begin{bmatrix} \bar{q}^1 \\ \vdots \\ \bar{q}^K \end{bmatrix} - \sum_{l=0}^L \Sigma_{\nu\nu}^{-1} \begin{bmatrix} \text{cov}(\nu^1, \tau^l) \\ \vdots \\ \text{cov}(\nu^K, \tau^l) \end{bmatrix} \sum_{s=0}^{S-1} \int_{\hat{l}(\boldsymbol{\varepsilon}, \boldsymbol{\rho})=l} \omega(\rho_{s+1}^l) \phi(\boldsymbol{\varepsilon}, \boldsymbol{\rho}) d(\boldsymbol{\varepsilon}, \boldsymbol{\rho}) \\
&= S \frac{\Sigma_{\nu\nu}^{-1}}{H} \begin{bmatrix} \bar{q}^1 \\ \vdots \\ \bar{q}^K \end{bmatrix} - \Sigma_{\nu\nu}^{-1} \sum_{l=0}^L \begin{bmatrix} \text{cov}(\nu^1, \tau^l) \\ \vdots \\ \text{cov}(\nu^K, \tau^l) \end{bmatrix} \Omega^l
\end{aligned}$$

where

$$\Omega^l = \sum_{s=0}^{S-1} \int_{\hat{l}(\boldsymbol{\varepsilon}, \boldsymbol{\rho})=l} \omega(\rho_{s+1}^l) \phi(\boldsymbol{\varepsilon}, \boldsymbol{\rho}) d(\boldsymbol{\varepsilon}, \boldsymbol{\rho}).$$

Then,

$$\begin{aligned}
\begin{bmatrix} \bar{q}^1 \\ \vdots \\ \bar{q}^K \end{bmatrix} &= H \Sigma_{\nu\nu} \begin{bmatrix} z^1 \\ \vdots \\ z^K \end{bmatrix} + \frac{H}{S} \sum_{l=0}^L \begin{bmatrix} \text{cov}(\nu^1, \tau^l) \\ \vdots \\ \text{cov}(\nu^K, \tau^l) \end{bmatrix} \Omega^l \\
&= H \Sigma_{\nu\nu} \boldsymbol{z} + \frac{H}{S} \Sigma_{\nu\tau} \boldsymbol{\Omega},
\end{aligned}$$

where

$$\boldsymbol{\Omega} = [ \Omega^1 \quad \dots \quad \Omega^L ]'.$$

■

### Proof of Proposition 12

Given a vector of house premia  $\bar{p}$ , and agent with  $(\boldsymbol{\varepsilon}, \boldsymbol{\rho})$  locates in  $l$  if

$$U^l = \max_{j=0, \dots, L} U^j$$

but we this is equivalent to

$$-\kappa_1 \bar{p}^l + \kappa_2 \varepsilon^l + \sum_{s=1}^S \xi_s \rho_s^l + \varsigma_s (\rho_s^l)^2 = \max_{j=0, \dots, L} \left( -\kappa_1 \bar{p}^j + \kappa_2 \varepsilon^j + \sum_{s=1}^S \xi_s \rho_s^j + \varsigma_s (\rho_s^j)^2 \right)$$

or

$$\frac{1}{\kappa_1} \left( \kappa_2 \varepsilon^l + \sum_{s=1}^S \xi_s \rho_s^l + \varsigma_s (\rho_s^l)^2 \right) - \bar{p}^l = \max_{j=0, \dots, L} \left( \frac{1}{\kappa_1} \left( \kappa_2 \varepsilon^j + \sum_{s=1}^S \xi_s \rho_s^j + \varsigma_s (\rho_s^j)^2 \right) - \bar{p}^j \right).$$

The rest of the proof is similar to the proof of Proposition 4 and it is omitted. ■